

Scott County, Iowa
Iowa South Zone (1402)
Horiz. Datum: NAD83(1996)
Vert. Datum: NAVD 1988
US Survey Feet
2005

Point Name: **612**

Designation: 2005-612 Scott County GPS Control Point

Northing: **644598.07sft** Easting: **2480567.91sft**

Orthometric Height: **609.09sft** Ellipsoid Height: **501.30sft** **Geoid03**

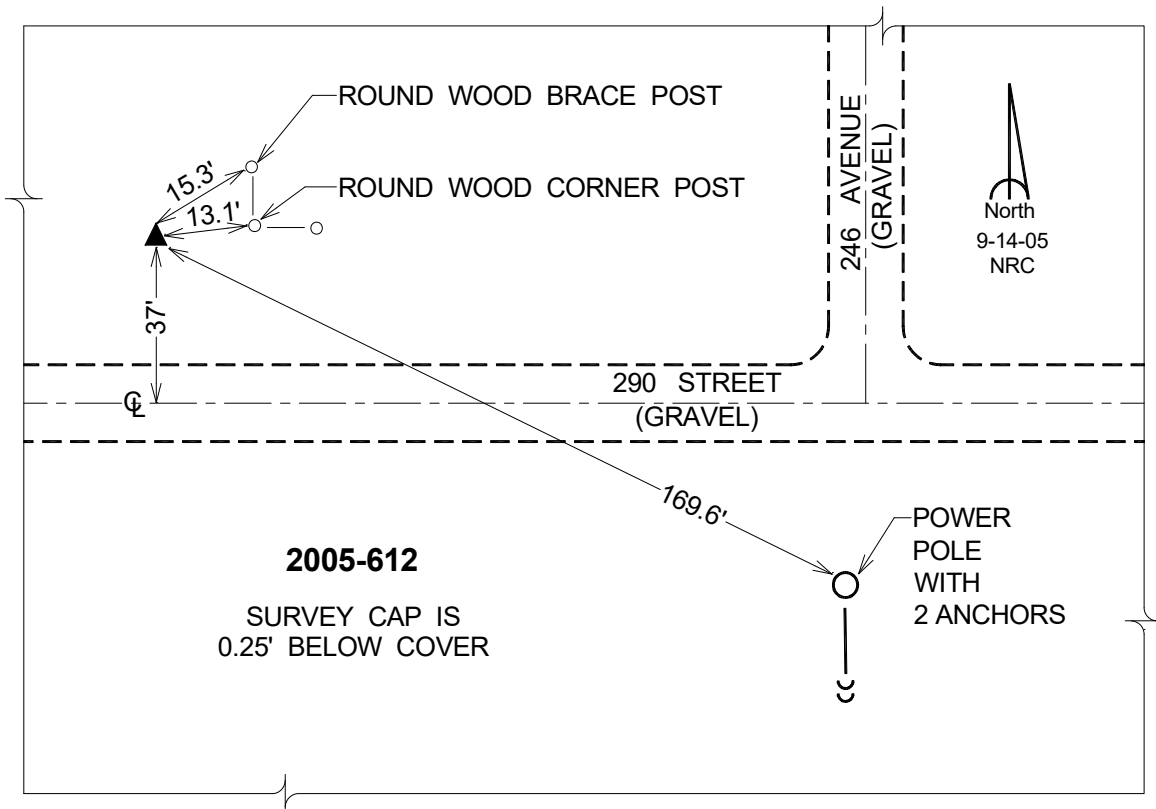
Latitude: **41°43'42.24795"N**

Longitude: **90°25'17.54332"W**

Mapping Angle: **2°01'40"**

Combination Scale Factor: **0.999966790**

Monument Type: Berntsen Top Security Rod Monument with a 2-1/2" dia. domed survey cap and permanent magnet encased in a 5" dia. PVC pipe with a NGS style aluminum access cover.



This document was prepared by DCI for use by Scott Co, Iowa.