

**Scott County, Iowa**  
Iowa South Zone (1402)  
Horiz. Datum: NAD83(1996)  
Vert. Datum: NAVD 1988  
US Survey Feet  
**2005**

Point Name: **615**

**Designation:** 2005-615 Scott County GPS Control Point

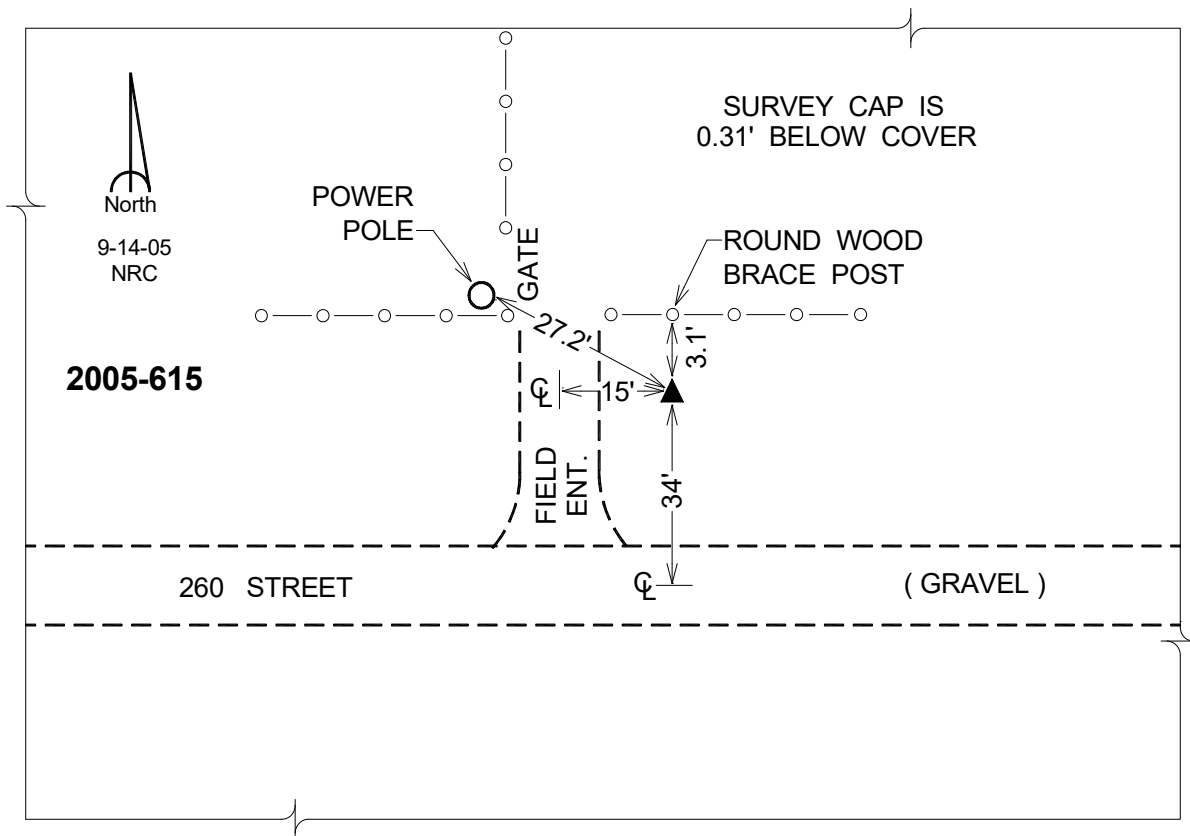
Northing: **624717.42sft**    Easting: **2367917.13sft**

Orthometric Height: **783.09sft**    Ellipsoid Height: **675.98sft**    **Geoid03**

Latitude: **41°41'02.67161"N**                      Longitude: **90°50'10.54944"W**

Mapping Angle: **1°45'17"**                      Combination Scale Factor: **0.999951630**

**Monument Type:** Berntsen Top Security Rod Monument with a 2-1/2" dia. domed survey cap and permanent magnet encased in a 5" dia. PVC pipe with a NGS style aluminum access cover.



*This document was prepared by DCI for use by Scott Co, Iowa.*