

**Scott County, Iowa**  
Iowa South Zone (1402)  
Horiz. Datum: NAD83(1996)  
Vert. Datum: NAVD 1988  
US Survey Feet  
**2005**

Point Name: **616**

**Designation:** 2005-616 Scott County GPS Control Point

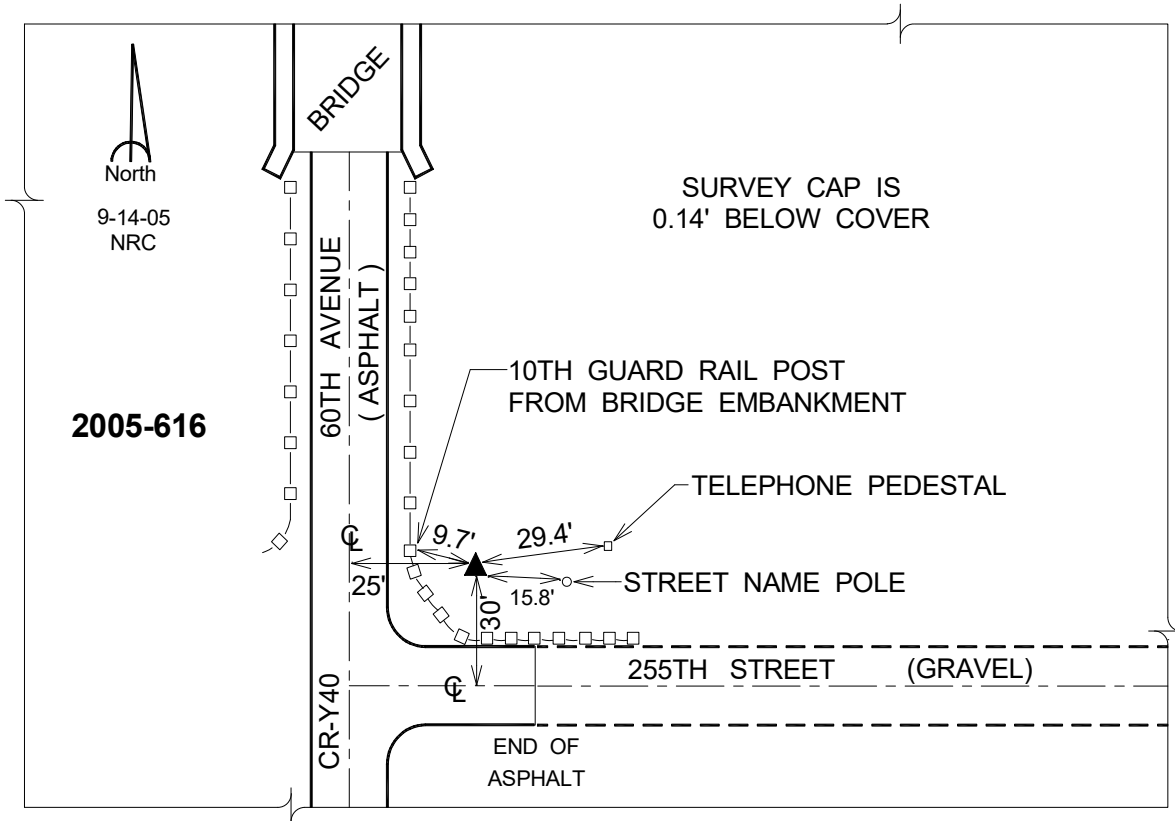
Northing: **622437.54sft**    Easting: **2382657.94sft**

Orthometric Height: **670.25sft**    Ellipsoid Height: **563.08sft**    **Geoid03**

Latitude: **41°40'35.65401"N**    Longitude: **90°46'57.30920"W**

Mapping Angle: **1°47'24"**    Combination Scale Factor: **0.999955920**

**Monument Type:** Berntsen Top Security Rod Monument with a 2-1/2" dia. domed survey cap and permanent magnet encased in a 5" dia. PVC pipe with a NGS style aluminum access cover.



*This document was prepared by DCI for use by Scott Co, Iowa.*