

Scott County, Iowa
Iowa South Zone (1402)
Horiz. Datum: NAD83(1996)
Vert. Datum: NAVD 1988
US Survey Feet
2005

Point Name: **618**

Designation: 2005-618 Scott County GPS Control Point

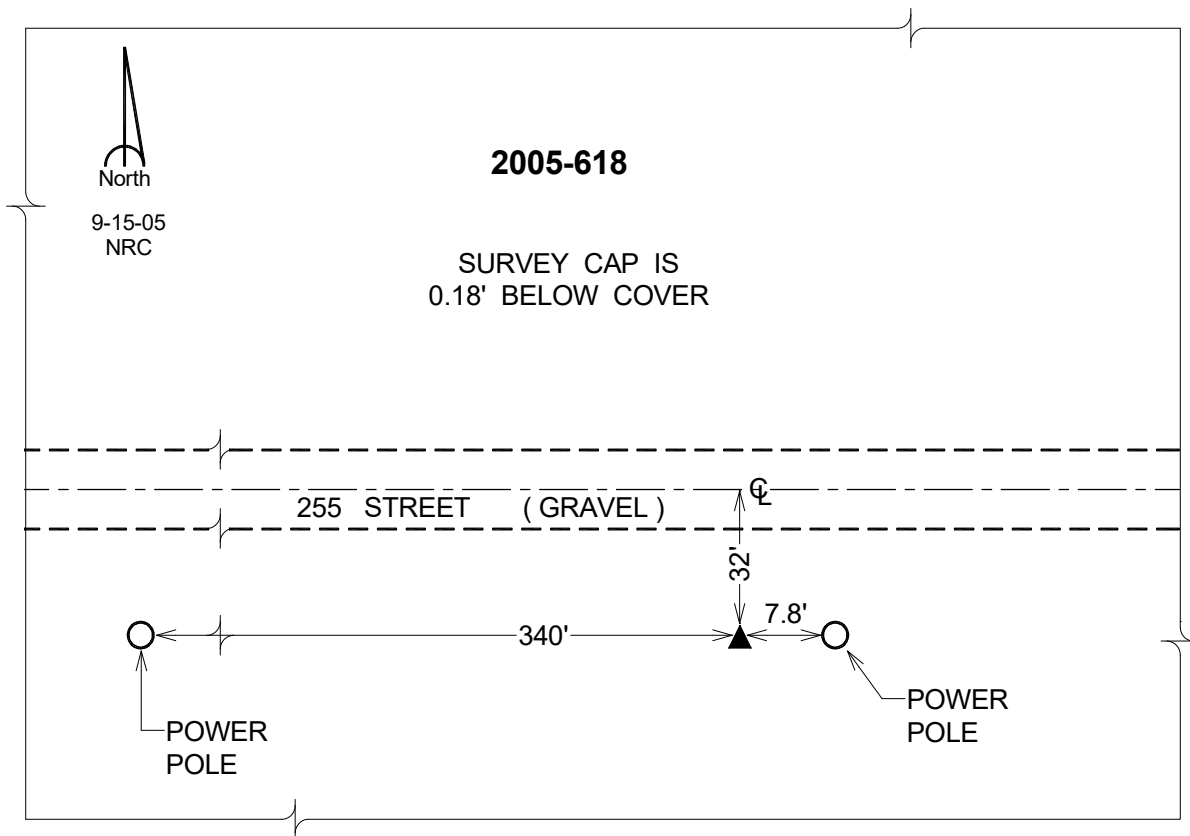
Northing: **623374.80sft** Easting: **2413792.66sft**

Orthometric Height: **757.87sft** Ellipsoid Height: **650.62sft** **Geoid03**

Latitude: **41°40'35.09950"N** Longitude: **90°40'06.83757"W**

Mapping Angle: **1°51'54"** Combination Scale Factor: **0.999951720**

Monument Type: Berntsen Top Security Rod Monument with a 2-1/2" dia. domed survey cap and permanent magnet encased in a 5" dia. PVC pipe with a NGS style aluminum access cover.



This document was prepared by DCI for use by Scott Co, Iowa.