

Scott County, Iowa
Iowa South Zone (1402)
Horiz. Datum: NAD83(1996)
Vert. Datum: NAVD 1988
US Survey Feet
2005

Point Name: **619**

Designation: 2005-619 Scott County GPS Control Point

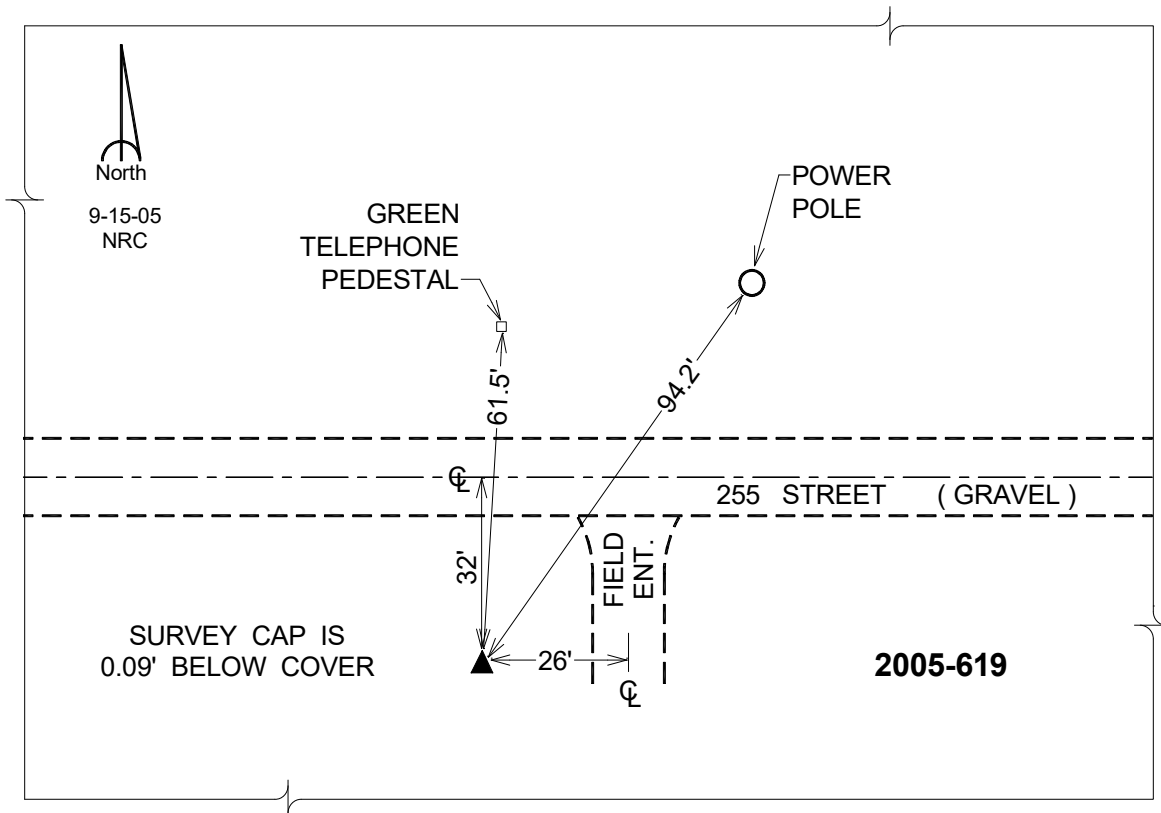
Northing: **623959.60**sft Easting: **2430616.07**sft

Orthometric Height: **774.25**sft Ellipsoid Height: **666.91**sft **Geoid03**

Latitude: **41°40'35.40570"N** Longitude: **90°36'25.00913"W**

Mapping Angle: **1°54'20"** Combination Scale Factor: **0.999950960**

Monument Type: Berntsen Top Security Rod Monument with a 2-1/2" dia. domed survey cap and permanent magnet encased in a 5" dia. PVC pipe with a NGS style aluminum access cover.



This document was prepared by DCI for use by Scott Co, Iowa.