

**Scott County, Iowa**  
Iowa South Zone (1402)  
Horiz. Datum: NAD83(1996)  
Vert. Datum: NAVD 1988  
US Survey Feet  
**2005**

Point Name: **620**

**Designation:** 2005-620 Scott County GPS Control Point

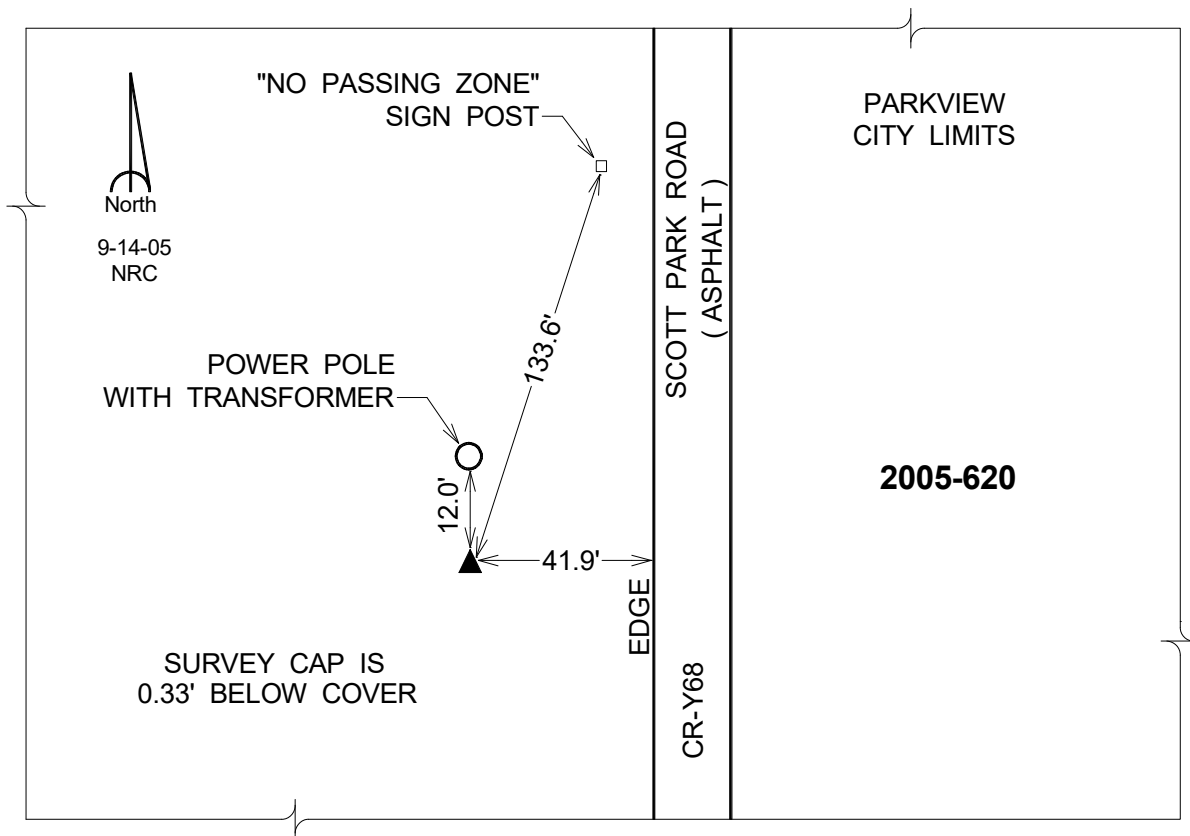
Northing: **627491.60sft**    Easting: **2446800.08sft**

Orthometric Height: **794.07sft**    Ellipsoid Height: **686.63sft**    **Geoid03**

Latitude: **41°41'04.90904"N**    Longitude: **90°32'50.28301"W**

Mapping Angle: **1°56'42"**    Combination Scale Factor: **0.999951210**

**Monument Type:** Berntsen Top Security Rod Monument with a 2-1/2" dia. domed survey cap and permanent magnet encased in a 5" dia. PVC pipe with a NGS style aluminum access cover.



*This document was prepared by DCI for use by Scott Co, Iowa.*