

Scott County, Iowa
Iowa South Zone (1402)
Horiz. Datum: NAD83(1996)
Vert. Datum: NAVD 1988
US Survey Feet
2005

Point Name: **621**

Designation: 2005-621 Scott County GPS Control Point

Northing: **627489.31sft** Easting: **2462336.02sft**

Orthometric Height: **745.16sft** Ellipsoid Height: **637.63sft** **Geoid03**

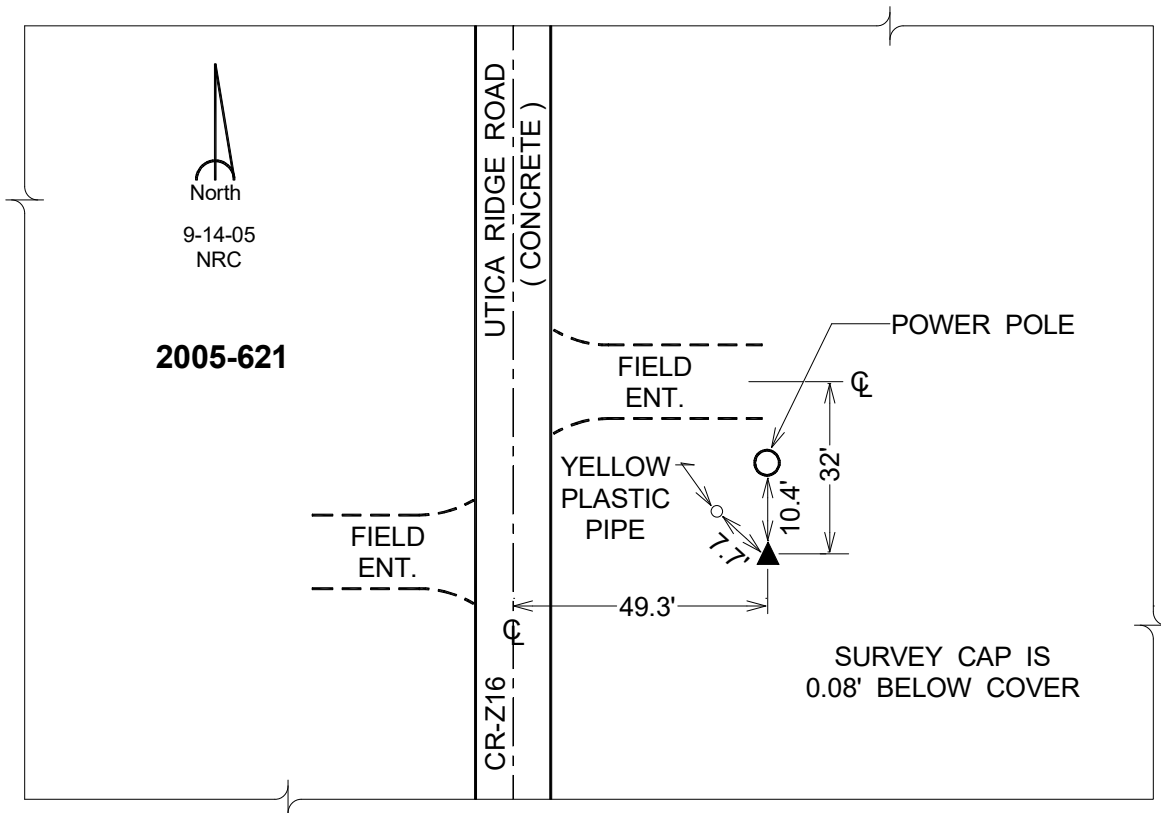
Latitude: **41°40'59.62698"N**

Longitude: **90°29'25.65173"W**

Mapping Angle: **1°58'57"**

Combination Scale Factor: **0.999953330**

Monument Type: Berntsen Top Security Rod Monument with a 2-1/2" dia. domed survey cap and permanent magnet encased in a 5" dia. PVC pipe with a NGS style aluminum access cover.



This document was prepared by DCI for use by Scott Co, Iowa.