

**Scott County, Iowa**  
Iowa South Zone (1402)  
Horiz. Datum: NAD83(1996)  
Vert. Datum: NAVD 1988  
US Survey Feet  
**2005**

Point Name: **622**

**Designation:** 2005-622 Scott County GPS Control Point

Northing: **629074.79**sft    Easting: **2478187.57**sft

Orthometric Height: **746.50**sft    Ellipsoid Height: **638.83**sft    **Geoid03**

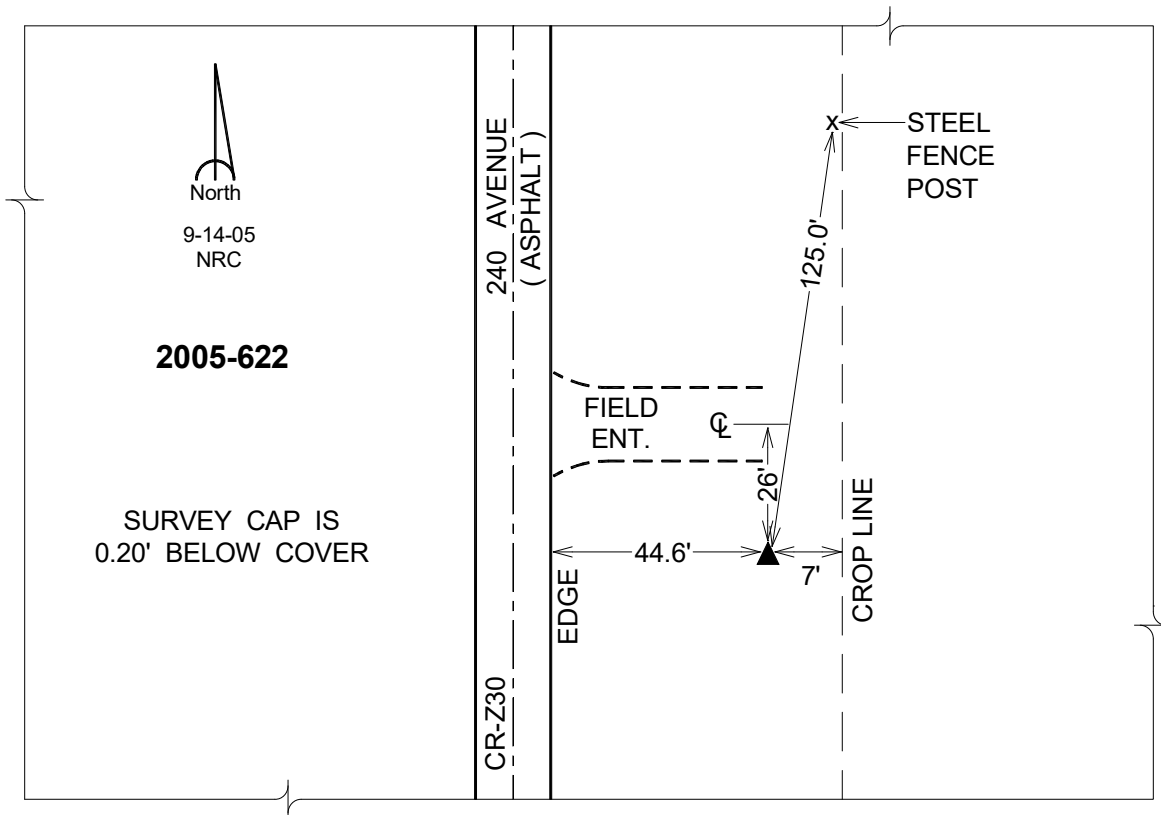
Latitude: **41°41'09.81163"N**

Longitude: **90°25'56.13516"W**

Mapping Angle: **2°01'15"**

Combination Scale Factor: **0.999953690**

**Monument Type:** Berntsen Top Security Rod Monument with a 2-1/2" dia. domed survey cap and permanent magnet encased in a 5" dia. PVC pipe with a NGS style aluminum access cover.



*This document was prepared by DCI for use by Scott Co, Iowa.*