

Scott County, Iowa
Iowa South Zone (1402)
Horiz. Datum: NAD83(1996)
Vert. Datum: NAVD 1988
US Survey Feet
2005

Point Name: **623**

Designation: 2005-623 Scott County GPS Control Point

Northing: **626206.77sft** Easting: **2499459.03sft**

Orthometric Height: **697.38sft** Ellipsoid Height: **589.49sft** **Geoid03**

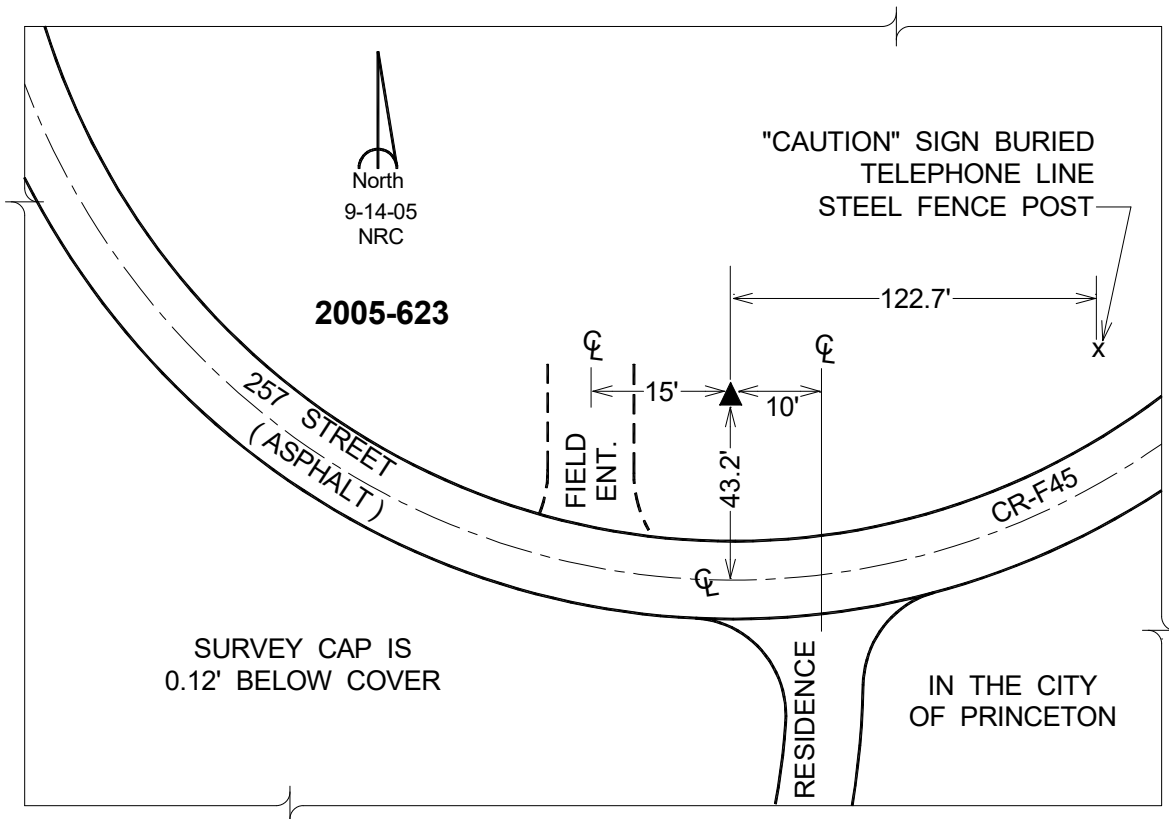
Latitude: **41°40'33.99097"N**

Longitude: **90°21'17.33320"W**

Mapping Angle: **2°04'18"**

Combination Scale Factor: **0.999954590**

Monument Type: Berntsen Top Security Rod Monument with a 2-1/2" dia. domed survey cap and permanent magnet encased in a 5" dia. PVC pipe with a NGS style aluminum access cover.



This document was prepared by DCI for use by Scott Co, Iowa.