

Scott County, Iowa
Iowa South Zone (1402)
Horiz. Datum: NAD83(1996)
Vert. Datum: NAVD 1988
US Survey Feet
2005

Point Name: **625**

Designation: 2005-625 Scott County GPS Control Point

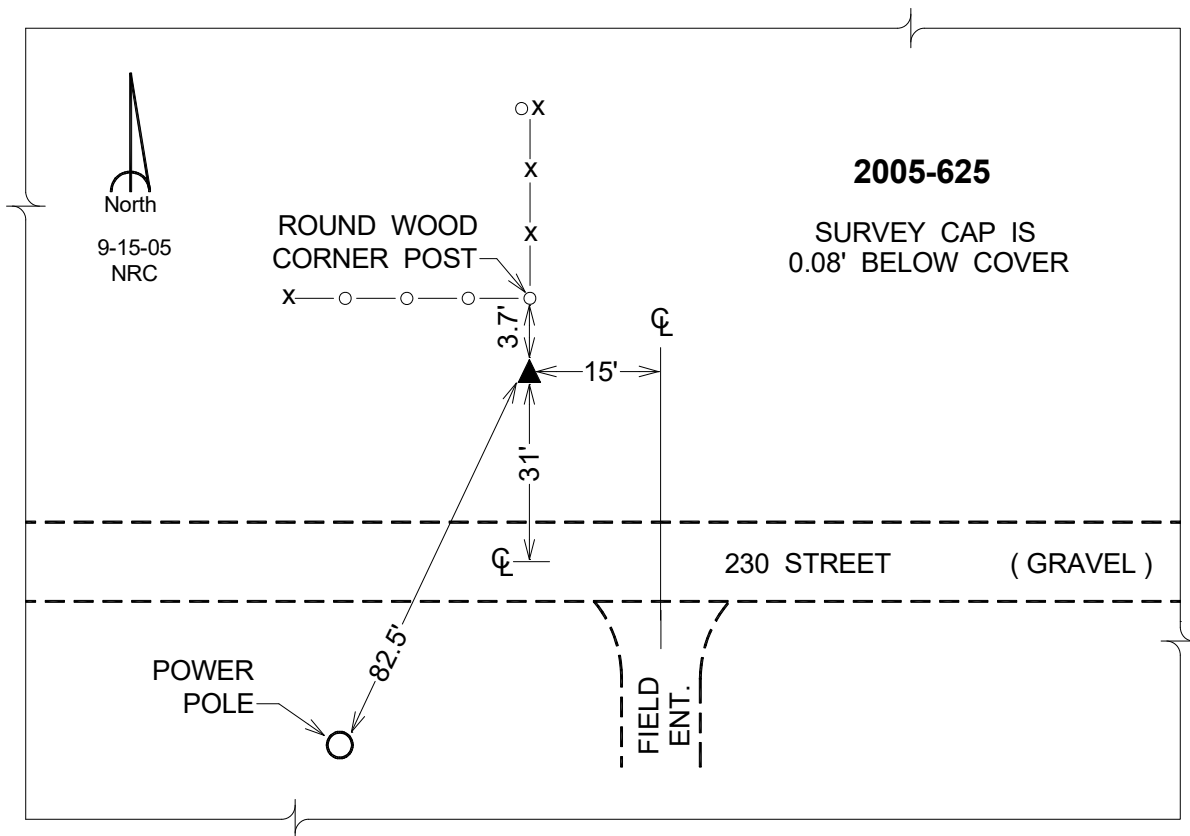
Northing: **608773.14sft** Easting: **2367077.71sft**

Orthometric Height: **745.69sft** Ellipsoid Height: **638.46sft** **Geoid03**

Latitude: **41°38'25.47469"N** Longitude: **90°50'28.02969"W**

Mapping Angle: **1°45'05"** Combination Scale Factor: **0.999947280**

Monument Type: Berntsen Top Security Rod Monument with a 2-1/2" dia. domed survey cap and permanent magnet encased in a 5" dia. PVC pipe with a NGS style aluminum access cover.



This document was prepared by DCI for use by Scott Co, Iowa.