

Scott County, Iowa
 Iowa South Zone (1402)
 Horiz. Datum: NAD83(1996)
 Vert. Datum: NAVD 1988
 US Survey Feet
2005

Point Name: **626**

Designation: 2005-626 Scott County GPS Control Point

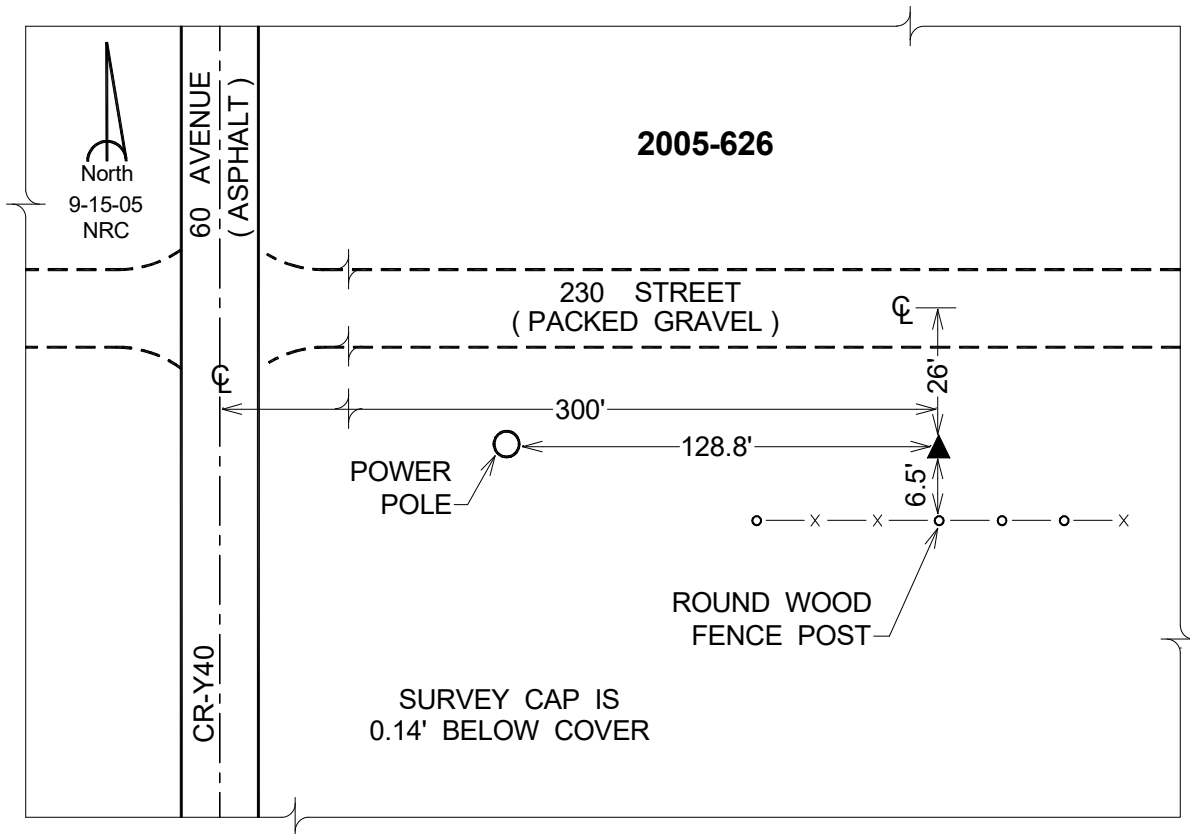
Northing: **609177.43sft** Easting: **2383248.79sft**

Orthometric Height: **753.84sft** Ellipsoid Height: **646.58sft** **Geoid03**

Latitude: **41°38'24.52981"N** Longitude: **90°46'54.98631"W**

Mapping Angle: **1°47'25"** Combination Scale Factor: **0.999946860**

Monument Type: Berntsen Top Security Rod Monument with a 2-1/2" dia. domed survey cap and permanent magnet encased in a 5" dia. PVC pipe with a NGS style aluminum access cover.



This document was prepared by DCI for use by Scott Co, Iowa.