

**Scott County, Iowa**  
Iowa South Zone (1402)  
Horiz. Datum: NAD83(1996)  
Vert. Datum: NAVD 1988  
US Survey Feet  
**2005**

Point Name: **627**

**Designation:** 2005-627 Scott County GPS Control Point

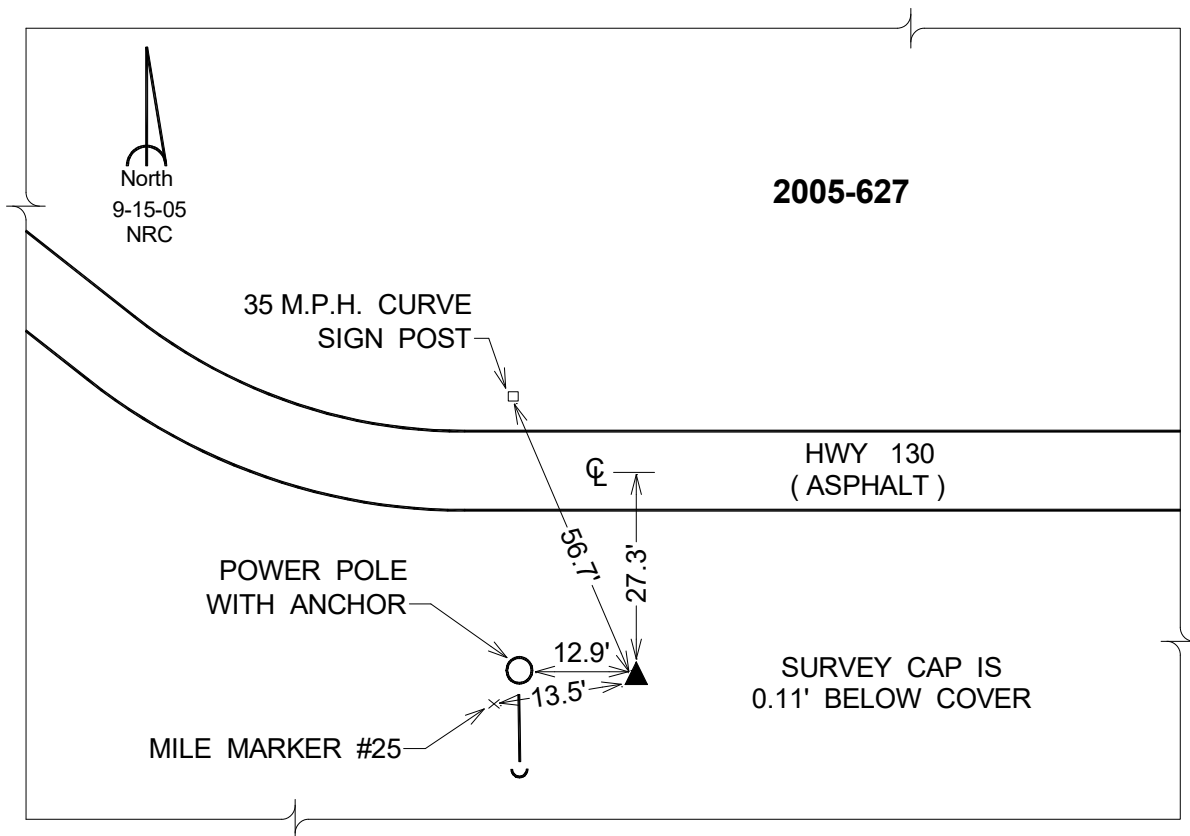
Northing: **612844.36sft**    Easting: **2397370.23sft**

Orthometric Height: **737.70sft**    Ellipsoid Height: **630.44sft**    **Geoid03**

Latitude: **41°38'56.33940"N**                      Longitude: **90°43'47.55726"W**

Mapping Angle: **1°49'29"**                      Combination Scale Factor: **0.999948830**

**Monument Type:** Berntsen Top Security Rod Monument with a 2-1/2" dia. domed survey cap and permanent magnet encased in a 5" dia. PVC pipe with a NGS style aluminum access cover.



*This document was prepared by DCI for use by Scott Co, Iowa.*