

Scott County, Iowa
Iowa South Zone (1402)
Horiz. Datum: NAD83(1996)
Vert. Datum: NAVD 1988
US Survey Feet
2005

Point Name: **628**

Designation: 2005-628 Scott County GPS Control Point

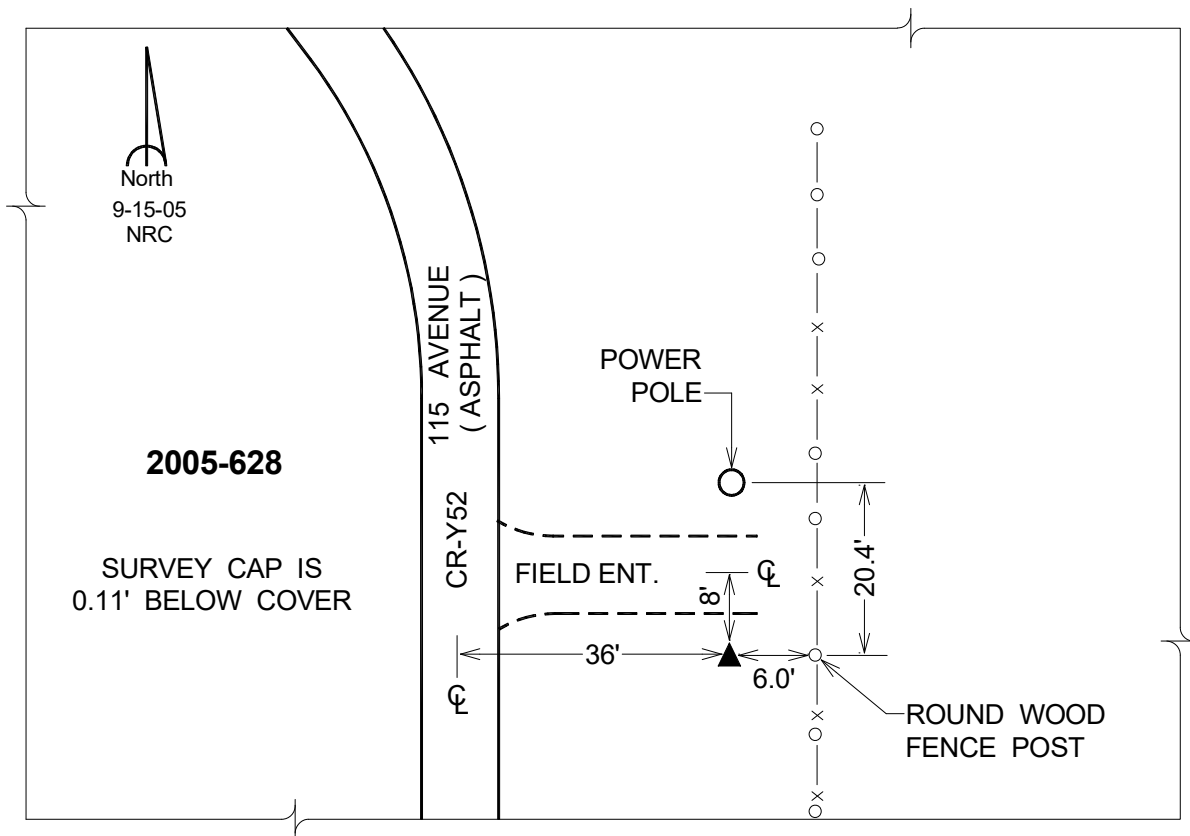
Northing: **610660.65sft** Easting: **2413586.70sft**

Orthometric Height: **737.82sft** Ellipsoid Height: **630.56sft** **Geoid03**

Latitude: **41°38'29.62035"N** Longitude: **90°40'14.99878"W**

Mapping Angle: **1°51'49"** Combination Scale Factor: **0.999947820**

Monument Type: Berntsen Top Security Rod Monument with a 2-1/2" dia. domed survey cap and permanent magnet encased in a 5" dia. PVC pipe with a NGS style aluminum access cover.



This document was prepared by DCI for use by Scott Co, Iowa.