

**Scott County, Iowa**  
Iowa South Zone (1402)  
Horiz. Datum: NAD83(1996)  
Vert. Datum: NAVD 1988  
US Survey Feet  
**2005**

Point Name: **630**

**Designation:** 2005-630 Scott County GPS Control Point

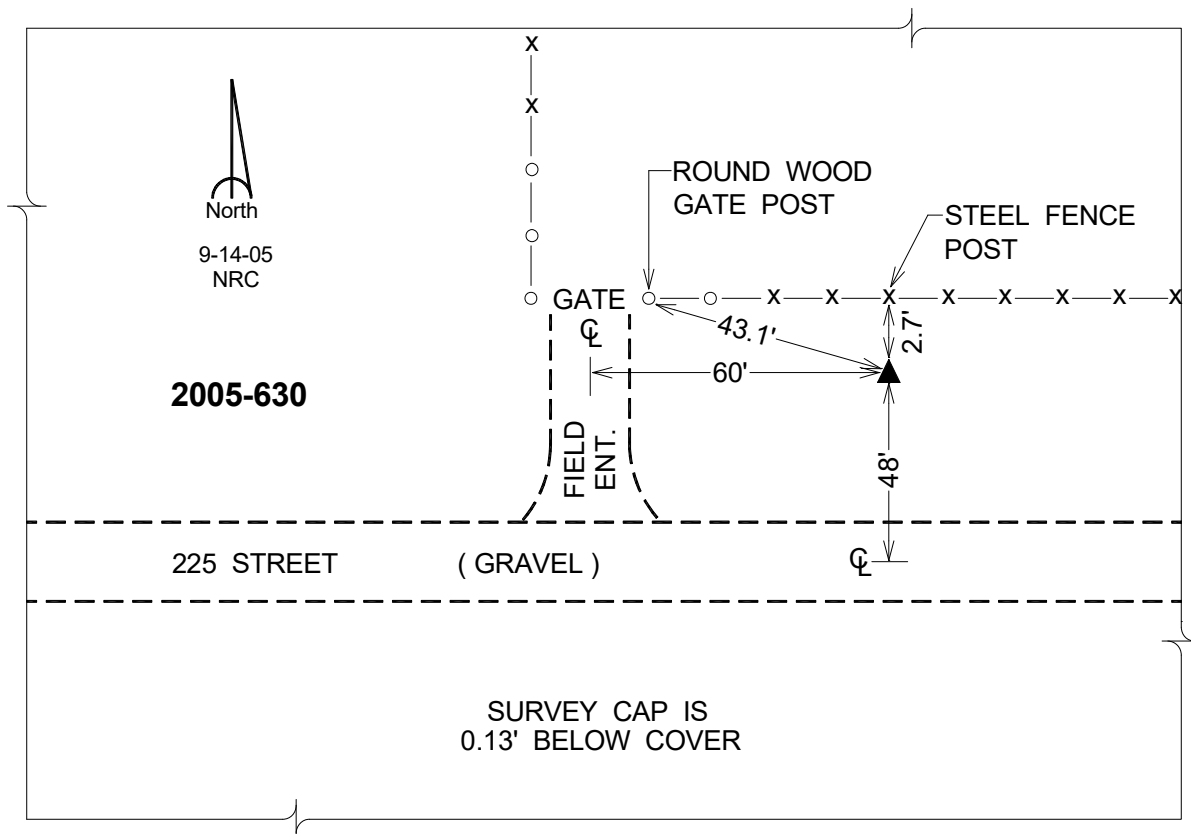
Northing: **610731.12sft**    Easting: **2496088.60sft**

Orthometric Height: **734.96sft**    Ellipsoid Height: **627.17sft**    **Geoid03**

Latitude: **41°38'02.39677"N**    Longitude: **90°22'09.05764"W**

Mapping Angle: **2°03'44"**    Combination Scale Factor: **0.999946970**

**Monument Type:** Berntsen Top Security Rod Monument with a 2-1/2" dia. domed survey cap and permanent magnet encased in a 5" dia. PVC pipe with a NGS style aluminum access cover.



*This document was prepared by DCI for use by Scott Co, Iowa.*