

Scott County, Iowa
Iowa South Zone (1402)
Horiz. Datum: NAD83(1996)
Vert. Datum: NAVD 1988
US Survey Feet
2005

Point Name: **631**

Designation: 2005-631 Scott County GPS Control Point

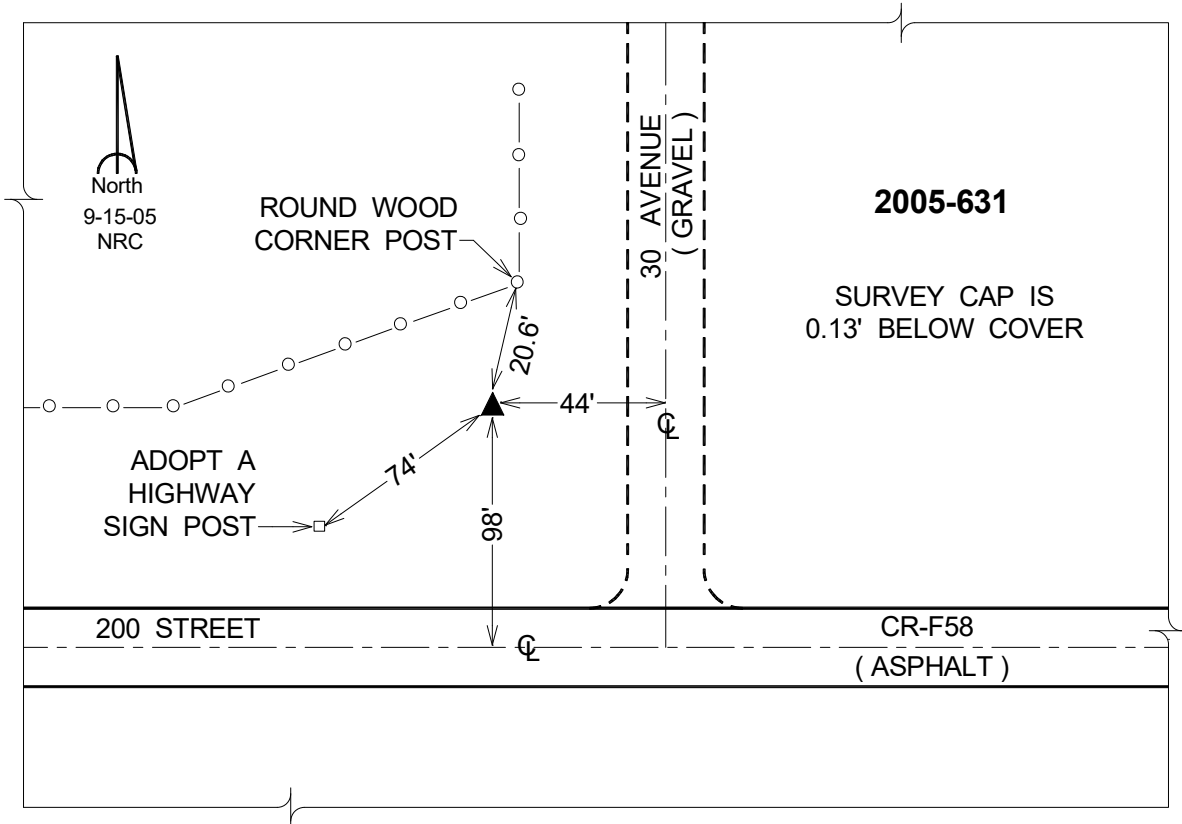
Northing: **592947.07**sft Easting: **2367473.39**sft

Orthometric Height: **718.56**sft Ellipsoid Height: **611.20**sft **Geoid03**

Latitude: **41°35'49.06971"N** Longitude: **90°50'29.19057"W**

Mapping Angle: **1°45'04"** Combination Scale Factor: **0.999943060**

Monument Type: Berntsen Top Security Rod Monument with a 2-1/2" dia. domed survey cap and permanent magnet encased in a 5" dia. PVC pipe with a NGS style aluminum access cover.



This document was prepared by DCI for use by Scott Co, Iowa.