

**Scott County, Iowa**  
Iowa South Zone (1402)  
Horiz. Datum: NAD83(1996)  
Vert. Datum: NAVD 1988  
US Survey Feet  
**2005**

Point Name: **632**

**Designation:** 2005-632 Scott County GPS Control Point

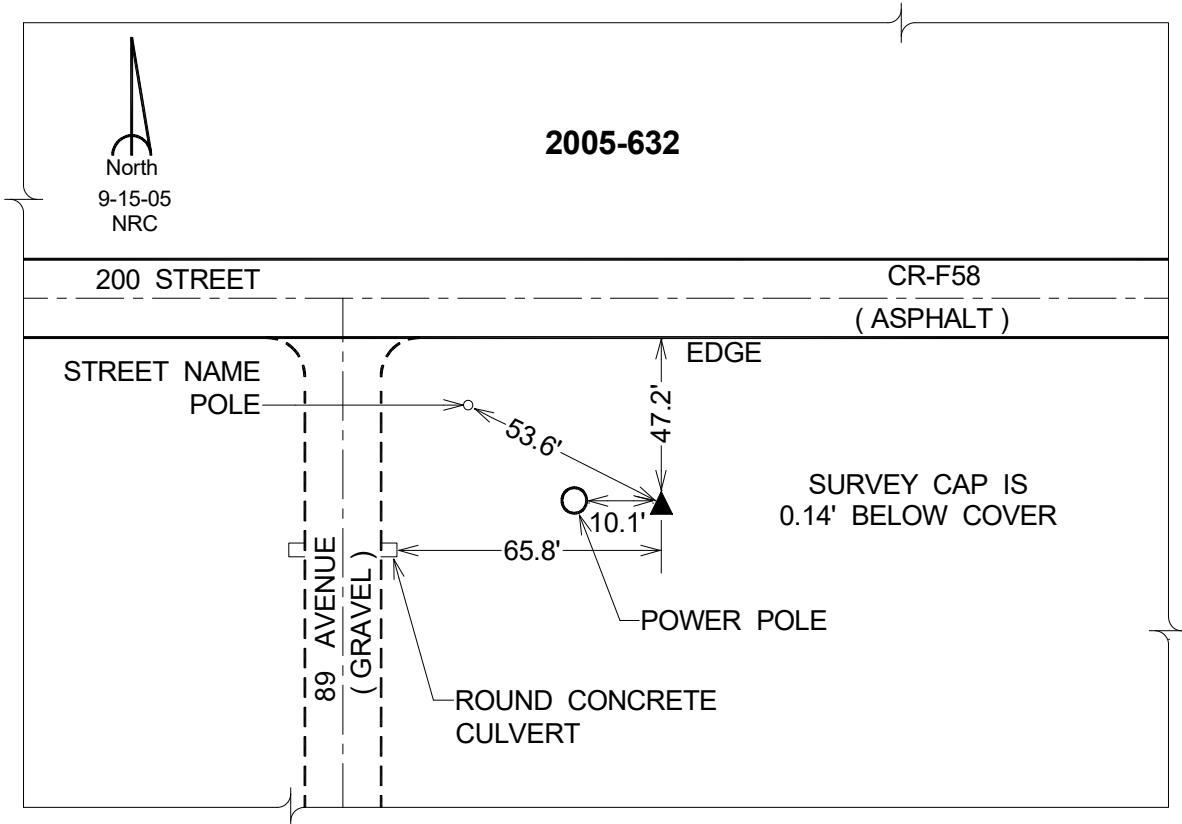
Northing: **593661.41**sft    Easting: **2398477.89**sft

Orthometric Height: **744.44**sft    Ellipsoid Height: **637.10**sft    **Geoid03**

Latitude: **41°35'46.56335"N**                      Longitude: **90°43'41.02534"W**

Mapping Angle: **1°49'33"**                      Combination Scale Factor: **0.999941740**

**Monument Type:** Berntsen Top Security Rod Monument with a 2-1/2" dia. domed survey cap and permanent magnet encased in a 5" dia. PVC pipe with a NGS style aluminum access cover.



*This document was prepared by DCI for use by Scott Co, Iowa.*