

Scott County, Iowa
Iowa South Zone (1402)
Horiz. Datum: NAD83(1996)
Vert. Datum: NAVD 1988
US Survey Feet
2005

Point Name: **633**

Designation: 2005-633 Scott County GPS Control Point

Northing: **593776.74sft** Easting: **2420534.90sft**

Orthometric Height: **742.91sft** Ellipsoid Height: **635.60sft** **Geoid03**

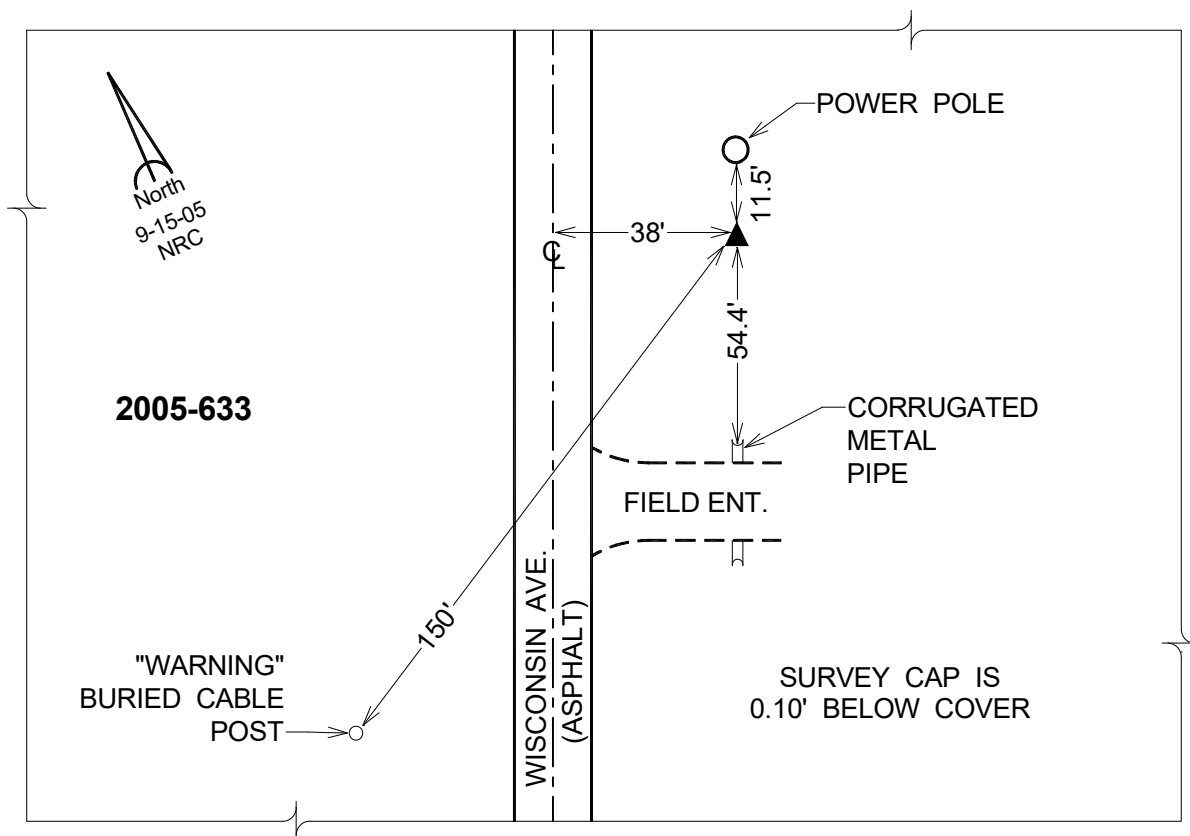
Latitude: **41°35'40.65788"N**

Longitude: **90°38'50.82650"W**

Mapping Angle: **1°52'44"**

Combination Scale Factor: **0.999941610**

Monument Type: Berntsen Top Security Rod Monument with a 2-1/2" dia. domed survey cap and permanent magnet encased in a 5" dia. PVC pipe with a NGS style aluminum access cover.



This document was prepared by DCI for use by Scott Co, Iowa.