

Scott County, Iowa
Iowa South Zone (1402)
Horiz. Datum: NAD83(1996)
Vert. Datum: NAVD 1988
US Survey Feet
2005

Point Name: **634**

Designation: 2005-634 Scott County GPS Control Point

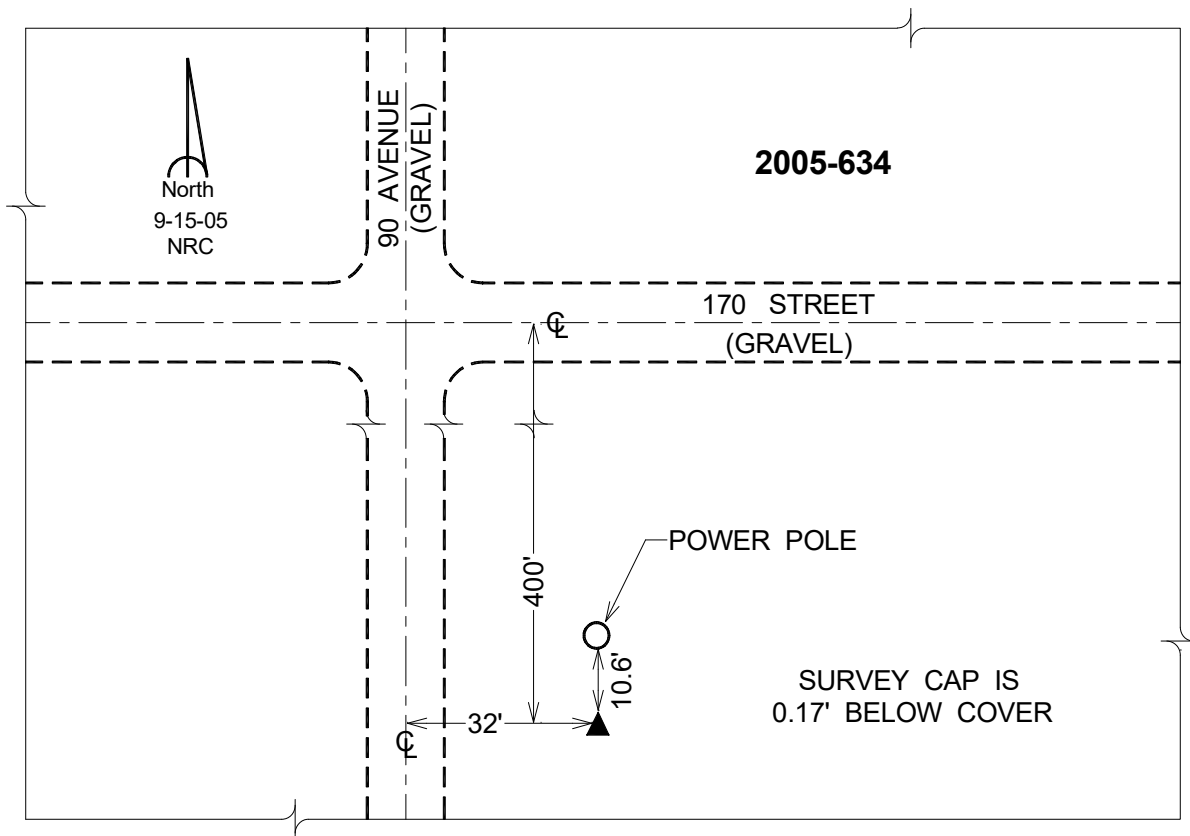
Northing: **577396.91**sft Easting: **2399446.03**sft

Orthometric Height: **748.45**sft Ellipsoid Height: **641.04**sft **Geoid03**

Latitude: **41°33'05.64790"N** Longitude: **90°43'35.11421"W**

Mapping Angle: **1°49'37"** Combination Scale Factor: **0.999936480**

Monument Type: Berntsen Top Security Rod Monument with a 2-1/2" dia. domed survey cap and permanent magnet encased in a 5" dia. PVC pipe with a NGS style aluminum access cover.



This document was prepared by DCI for use by Scott Co, Iowa.