

**Scott County, Iowa**  
Iowa South Zone (1402)  
Horiz. Datum: NAD83(1996)  
Vert. Datum: NAVD 1988  
US Survey Feet  
**2005**

Point Name: **635**

**Designation:** 2005-635 Scott County GPS Control Point

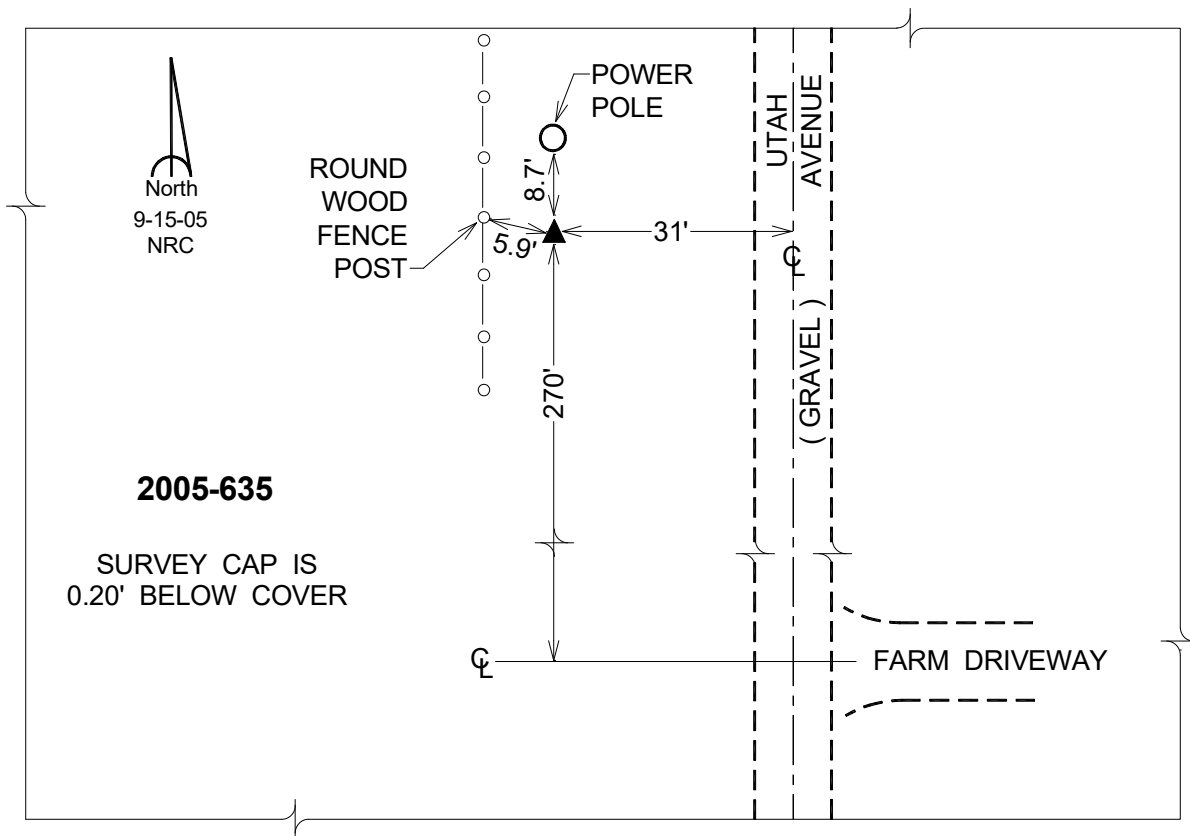
Northing: **577685.96sft**    Easting: **2415327.62sft**

Orthometric Height: **706.41sft**    Ellipsoid Height: **599.05sft**    **Geoid03**

Latitude: **41°33'03.44747"N**                      Longitude: **90°40'06.21732"W**

Mapping Angle: **1°51'55"**                      Combination Scale Factor: **0.999938410**

**Monument Type:** Berntsen Top Security Rod Monument with a 2-1/2" dia. domed survey cap and permanent magnet encased in a 5" dia. PVC pipe with a NGS style aluminum access cover.



*This document was prepared by DCI for use by Scott Co, Iowa.*