

**Scott County, Iowa**  
Iowa South Zone (1402)  
Horiz. Datum: NAD83(1996)  
Vert. Datum: NAVD 1988  
US Survey Feet  
**2005**

Point Name: **636**

**Designation:** 2005-636 Scott County GPS Control Point

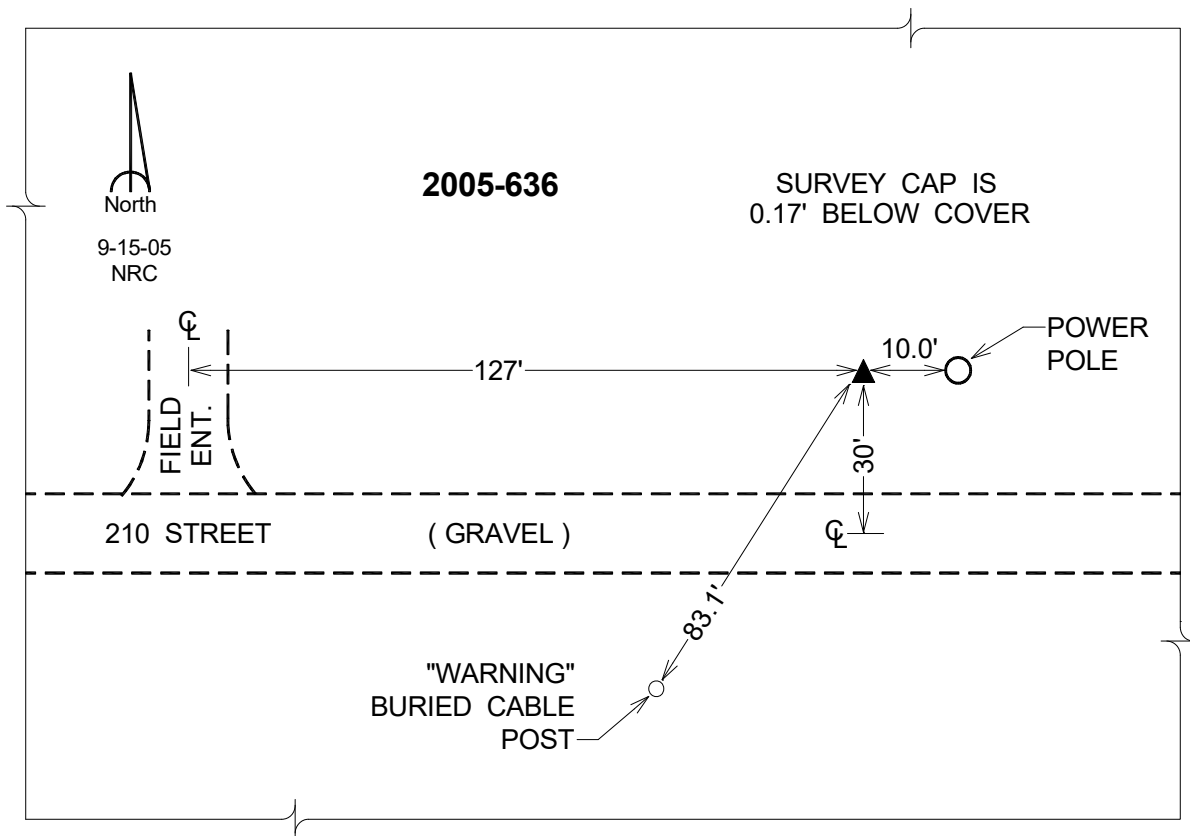
Northing: **599369.31**sft    Easting: **2407314.50**sft

Orthometric Height: **726.94**sft    Ellipsoid Height: **619.64**sft    **Geoid03**

Latitude: **41°36'40.12941"N**                      Longitude: **90°41'42.35999"W**

Mapping Angle: **1°50'51"**                      Combination Scale Factor: **0.999944400**

**Monument Type:** Berntsen Top Security Rod Monument with a 2-1/2" dia. domed survey cap and permanent magnet encased in a 5" dia. PVC pipe with a NGS style aluminum access cover.



*This document was prepared by DCI for use by Scott Co, Iowa.*