

Scott County, Iowa
 Iowa South Zone (1402)
 Horiz. Datum: NAD83(1996)
 Vert. Datum: NAVD 1988
 US Survey Feet
2005

Point Name: **638**

Designation: 2005-638 Scott County GPS Control Point

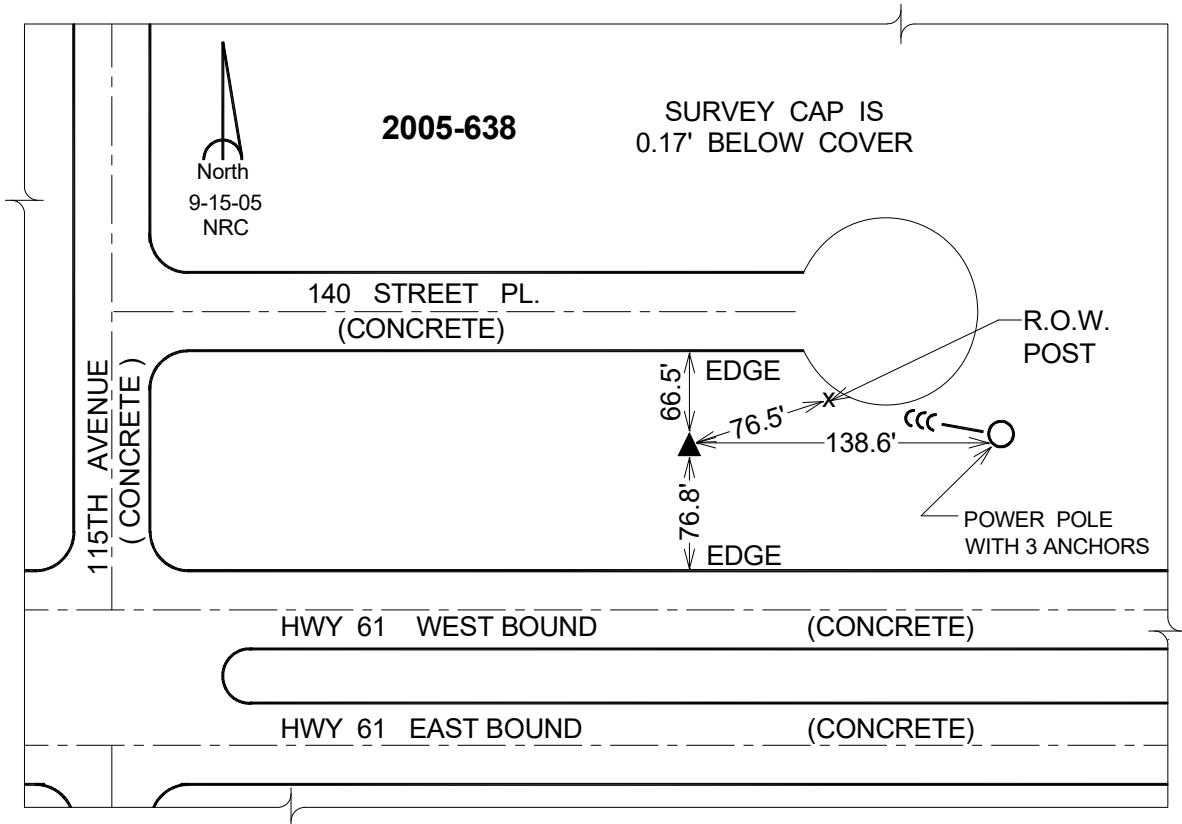
Northing: **562447.68sft** Easting: **2413529.65sft**

Orthometric Height: **752.06sft** Ellipsoid Height: **644.68sft** **Geoid03**

Latitude: **41°30'33.54922"N** Longitude: **90°40'36.35649"W**

Mapping Angle: **1°51'35"** Combination Scale Factor: **0.999932070**

Monument Type: Berntsen Top Security Rod Monument with a 2-1/2" dia. domed survey cap and permanent magnet encased in a 5" dia. PVC pipe with a NGS style aluminum access cover.



This document was prepared by DCI for use by Scott Co, Iowa.