

Scott County, Iowa
Iowa South Zone (1402)
Horiz. Datum: NAD83(1996)
Vert. Datum: NAVD 1988
US Survey Feet
2005

Point Name: **639**

Designation: 2005-639 Scott County GPS Control Point

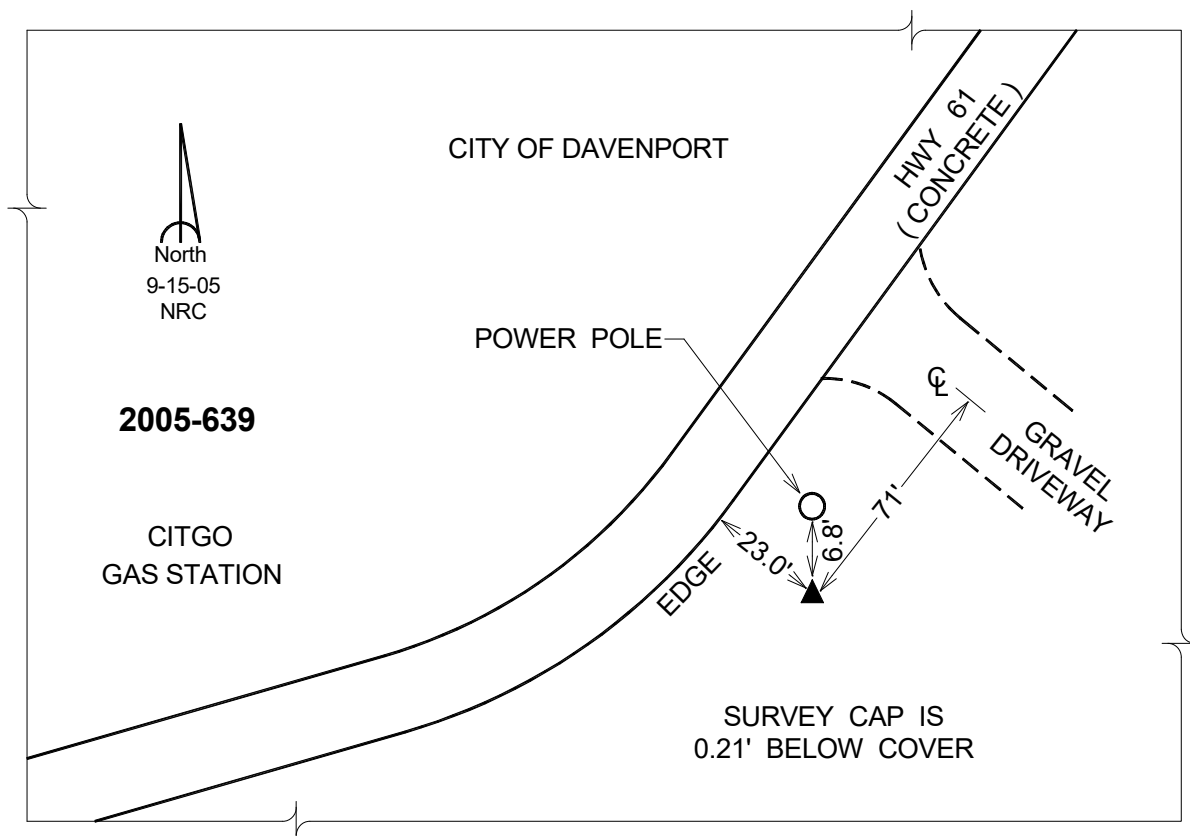
Northing: **563786.37**sft Easting: **2433514.57**sft

Orthometric Height: **562.16**sft Ellipsoid Height: **454.77**sft **Geoid03**

Latitude: **41°30'40.27785"N** Longitude: **90°36'13.23291"W**

Mapping Angle: **1°54'28"** Combination Scale Factor: **0.999941300**

Monument Type: Berntsen Top Security Rod Monument with a 2-1/2" dia. domed survey cap and permanent magnet encased in a 5" dia. PVC pipe with a NGS style aluminum access cover.



This document was prepared by DCI for use by Scott Co, Iowa.