

Scott County, Iowa
Iowa South Zone (1402)
Horiz. Datum: NAD83(1996)
Vert. Datum: NAVD 1988
US Survey Feet
2005

Point Name: **640**

Designation: 2005-640 Scott County GPS Control Point

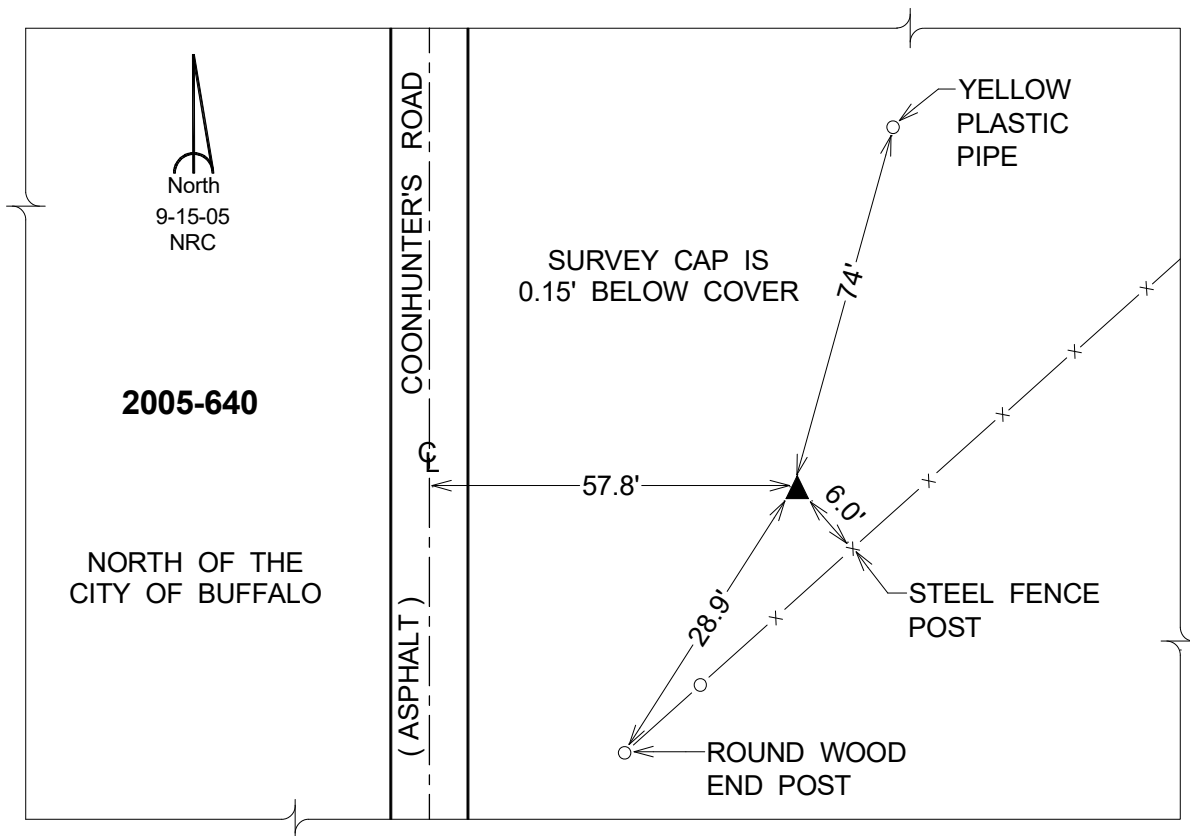
Northing: **547046.28sft** Easting: **2400238.53sft**

Orthometric Height: **711.01sft** Ellipsoid Height: **603.45sft** **Geoid03**

Latitude: **41°28'05.68302"N** Longitude: **90°43'37.41978"W**

Mapping Angle: **1°49'36"** Combination Scale Factor: **0.999930440**

Monument Type: Berntsen Top Security Rod Monument with a 2-1/2" dia. domed survey cap and permanent magnet encased in a 5" dia. PVC pipe with a NGS style aluminum access cover.



This document was prepared by DCI for use by Scott Co, Iowa.