

**Scott County, Iowa**  
Iowa South Zone (1402)  
Horiz. Datum: NAD83(1996)  
Vert. Datum: NAVD 1988  
US Survey Feet  
**2005**

Point Name: **641**

**Designation:** 2005-641 Scott County GPS Control Point

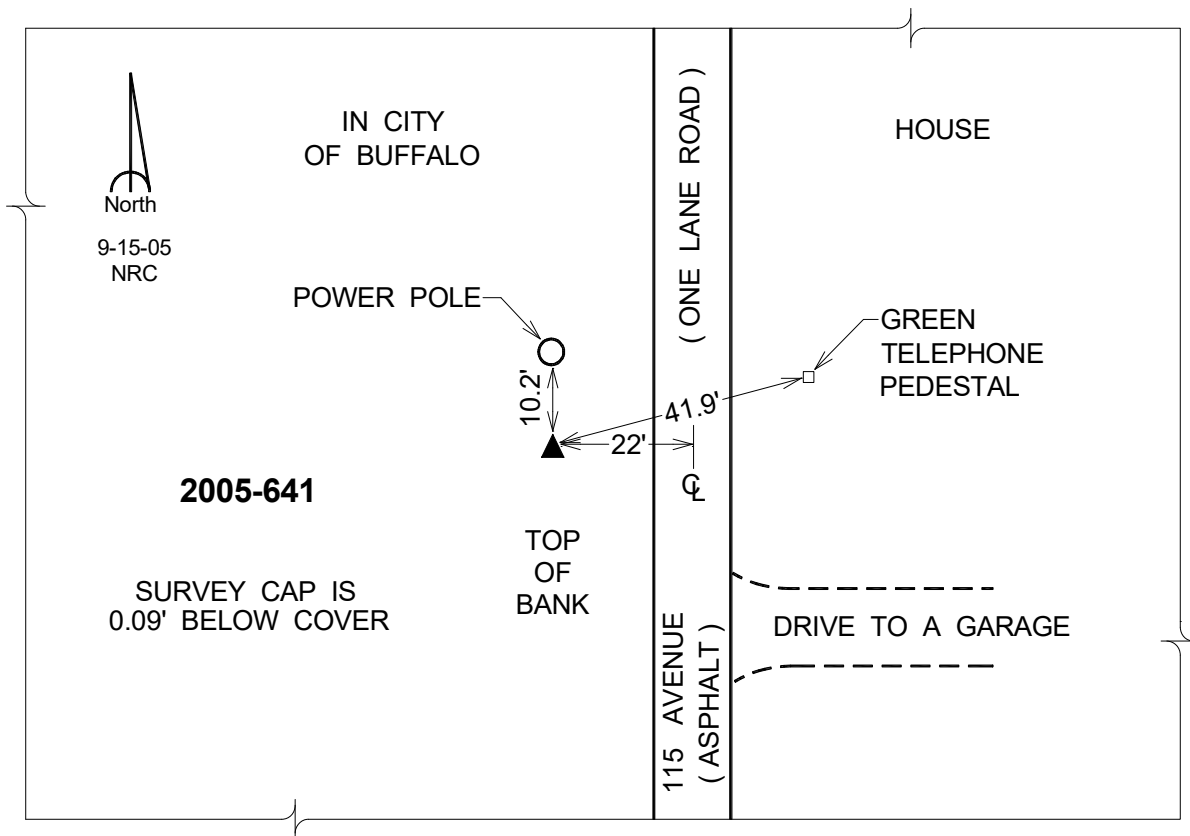
Northing: **547252.18sft**    Easting: **2413467.80sft**

Orthometric Height: **652.78sft**    Ellipsoid Height: **545.28sft**    **Geoid03**

Latitude: **41°28'03.51389"N**    Longitude: **90°40'43.64599"W**

Mapping Angle: **1°51'30"**    Combination Scale Factor: **0.999933160**

**Monument Type:** Berntsen Top Security Rod Monument with a 2-1/2" dia. domed survey cap and permanent magnet encased in a 5" dia. PVC pipe with a NGS style aluminum access cover.



*This document was prepared by DCI for use by Scott Co, Iowa.*