

Scott County, Iowa
Iowa South Zone (1402)
Horiz. Datum: NAD83(1996)
Vert. Datum: NAVD 1988
US Survey Feet
2005

Point Name: **642**

Designation: 2005-642 Scott County GPS Control Point

Northing: **655956.01**sft Easting: **2408149.67**sft

Orthometric Height: **640.80**sft Ellipsoid Height: **533.65**sft **Geoid03**

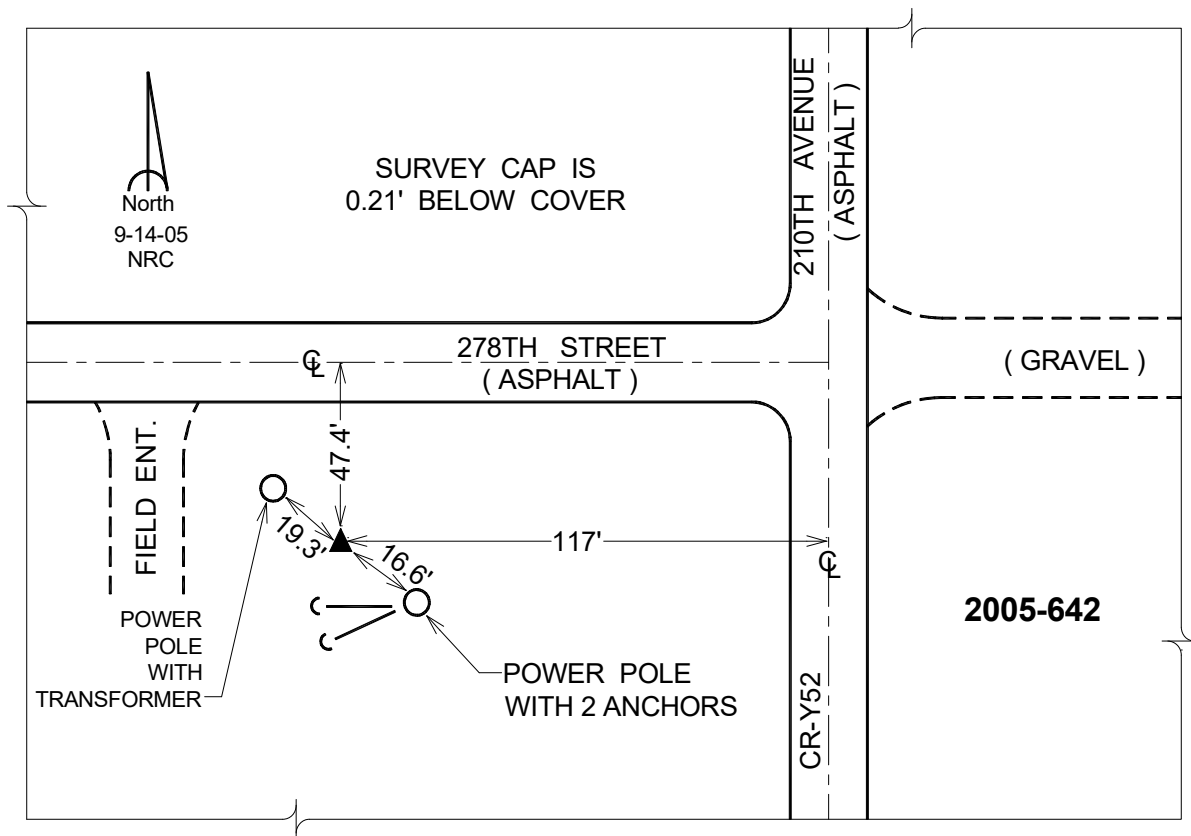
Latitude: **41°45'58.62467"N**

Longitude: **90°41'07.26997"W**

Mapping Angle: **1°51'14"**

Combination Scale Factor: **0.999971550**

Monument Type: Berntsen Top Security Rod Monument with a 2-1/2" dia. domed survey cap and permanent magnet encased in a 5" dia. PVC pipe with a NGS style aluminum access cover.



This document was prepared by DCI for use by Scott Co, Iowa.