

SIoux COUNTY, IOWA
GPS CONTROL MONUMENT
IOWA NORTH ZONE (1401)
HORIZONTAL DATUM - NAD 83 (1996)
VERTICAL DATUM - NAVD 1988

GPS POINT NUMBER **G100**

	US SURVEY FEET	METRIC
Northing:	3803854.662	1159417.220
Easting:	4289232.928	1307360.811
Elevation:	1420.059	432.835
Ellipsoid Height:	1331.789	405.930
Geoid 99 Height:	-88.270	-26.905

Latitude: 42° 54' 39.54438" N

Longitude: 95° 51' 34.18141" W

Scale Factor: 0.9999543654

Convergence: -1° 35' 56.9"

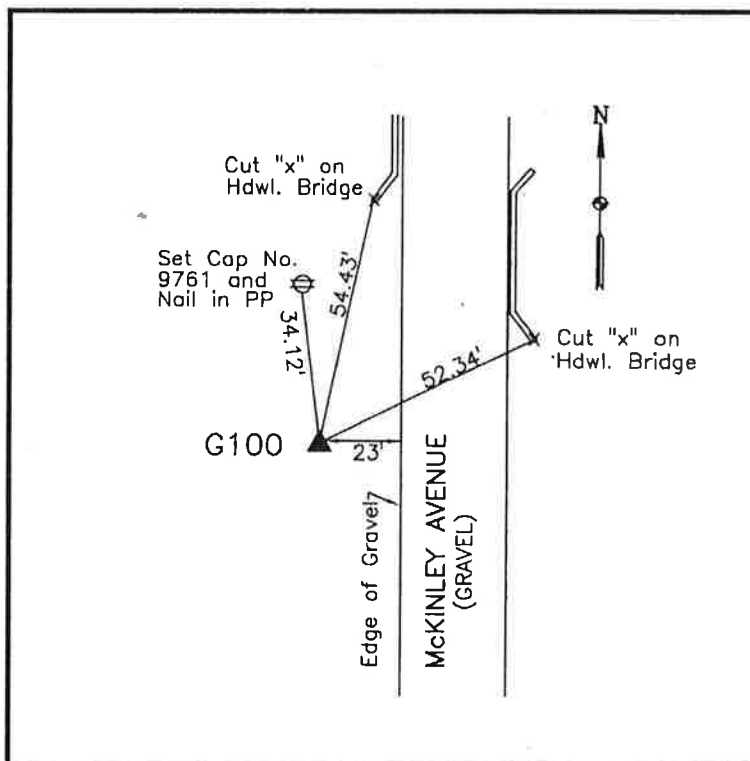
Combined Factor: 0.99989083

Description:

Placed 3/4" X 6" - 0" Long
 Aluminum Rod with Cap
 Stamped G100 and NGS Style
 Access Cover 1" Deep

Location:

West side of McKinley Avenue
 0.1 mile north of 510th Street in
 Section 36, T94N, R43W near
 culvert under McKinley Avenue.



WHKS & CO.

G100