

**SIOUX COUNTY, IOWA  
GPS CONTROL MONUMENT  
IOWA NORTH ZONE (1401)  
HORIZONTAL DATUM - NAD 83 (1996)  
VERTICAL DATUM - NAVD 1988**

GPS POINT NUMBER **G101**

|                   | US SURVEY FEET | METRIC      |
|-------------------|----------------|-------------|
| Northing:         | 3803824.821    | 1159408.124 |
| Easting:          | 4273486.813    | 1302561.386 |
| Elevation:        | 1433.753       | 437.009     |
| Ellipsoid Height: | 1345.908       | 410.234     |
| Geoid 99 Height:  | -87.844        | -26.775     |

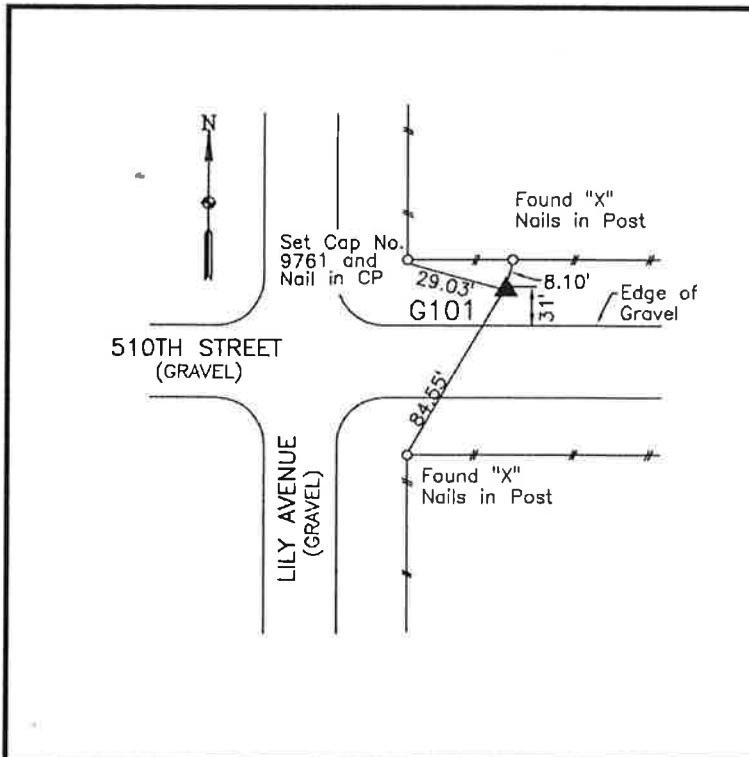
|                  |                     |
|------------------|---------------------|
| Latitude:        | 42° 54' 34.85522" N |
| Longitude:       | 95° 55' 05.68051" W |
| Scale Factor:    | 0.9999542693        |
| Convergence:     | -1° 38' 20.2"       |
| Combined Factor: | 0.99989006          |

Description:

Found Plymouth County GPS Monument 116 with NGS style access cover in Sioux County

Location:

Northeast corner of intersection of Lily Avenue and 510th Street in Section 34, T94N, R43W.



**WHKS & CO.**