

**SIOUX COUNTY, IOWA
GPS CONTROL MONUMENT
IOWA NORTH ZONE (1401)
HORIZONTAL DATUM - NAD 83 (1996)
VERTICAL DATUM - NAVD 1988**

GPS POINT NUMBER **G102**

| | US SURVEY FEET | METRIC |
|-------------------|----------------|-------------|
| Northing: | 3804314.796 | 1159557.469 |
| Easting: | 4257690.581 | 1297746.685 |
| Elevation: | 1353.479 | 412.541 |
| Ellipsoid Height: | 1266.032 | 385.887 |
| Geoid 99 Height: | -87.447 | -26.654 |

Latitude: 42° 54' 35.17595" N

Longitude: 95° 58' 38.04846" W

Scale Factor: 0.9999542758

Convergence: -1° 40' 44.2"

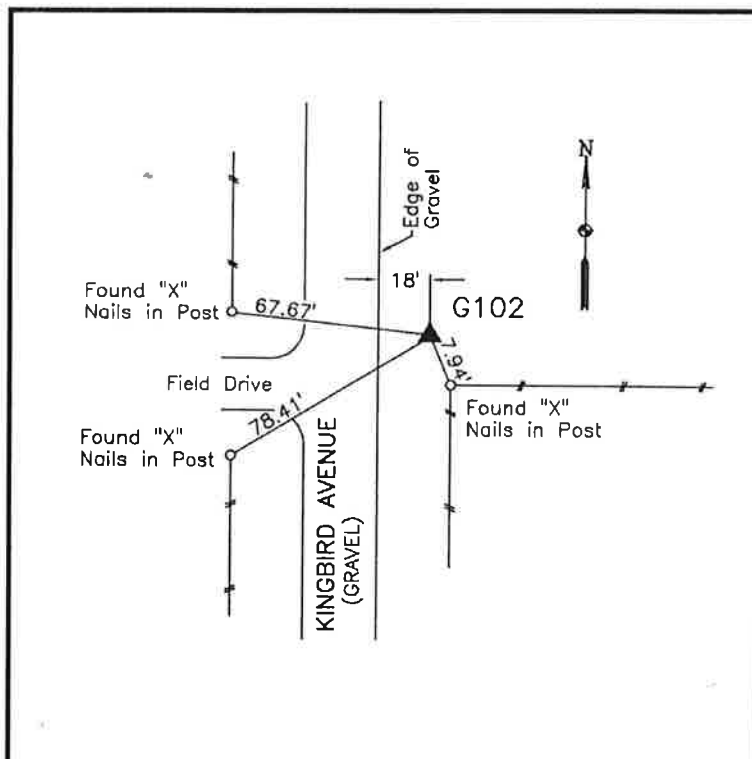
Combined Factor: 0.99989387

Description:

Placed 3/4" X 6' - 0" Long
Aluminum Rod with Cap
Stamped G102 and NGS Style
Access Cover 4" Deep

Location:

East side Kingbird Avenue at
south county line in Section 31,
T94N, R43W.



=====**WHKS & CO.**=====