

**SIOUX COUNTY, IOWA
GPS CONTROL MONUMENT
IOWA NORTH ZONE (1401)
HORIZONTAL DATUM - NAD 83 (1996)
VERTICAL DATUM - NAVD 1988**

GPS POINT NUMBER **G103**

	US SURVEY FEET	METRIC
Northing:	3804930.912	1159745.262
Easting:	4241868.375	1292924.067
Elevation:	1399.368	426.528
Ellipsoid Height:	1312.315	399.994
Geoid 99 Height:	-87.053	-26.534

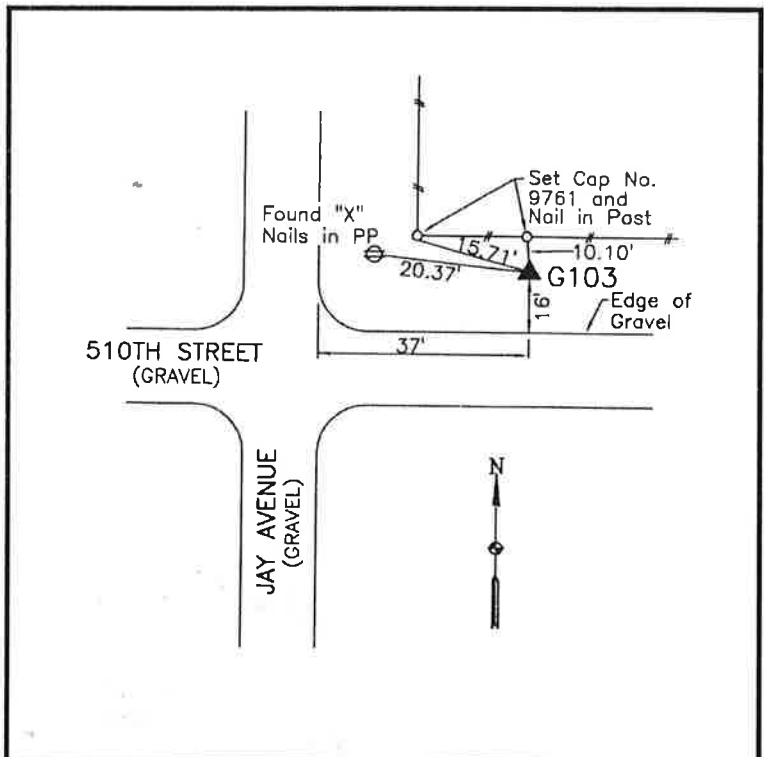
Latitude:	42° 54' 36.62548" N
Longitude:	96° 02' 10.81664" W
Scale Factor:	0.9999543055
Convergence:	-1° 43' 08.4"
Combined Factor:	0.99989170

Description:

Found Plymouth County GPS Monument 98 with NGS style access cover in Sioux County

Location:

Northeast corner of intersection Jay Avenue and 510th Street in Section 34, T94N, R44W.



WHKS & CO.