

**SIOUX COUNTY, IOWA
GPS CONTROL MONUMENT
IOWA NORTH ZONE (1401)
HORIZONTAL DATUM - NAD 83 (1996)
VERTICAL DATUM - NAVD 1988**

GPS POINT NUMBER **G104**

	US SURVEY FEET	METRIC
Northing:	3805373.809	1159880.257
Easting:	4226301.224	1288179.189
Elevation:	1363.244	415.518
Ellipsoid Height:	1276.573	389.100
Geoid 99 Height:	-86.671	-26.417

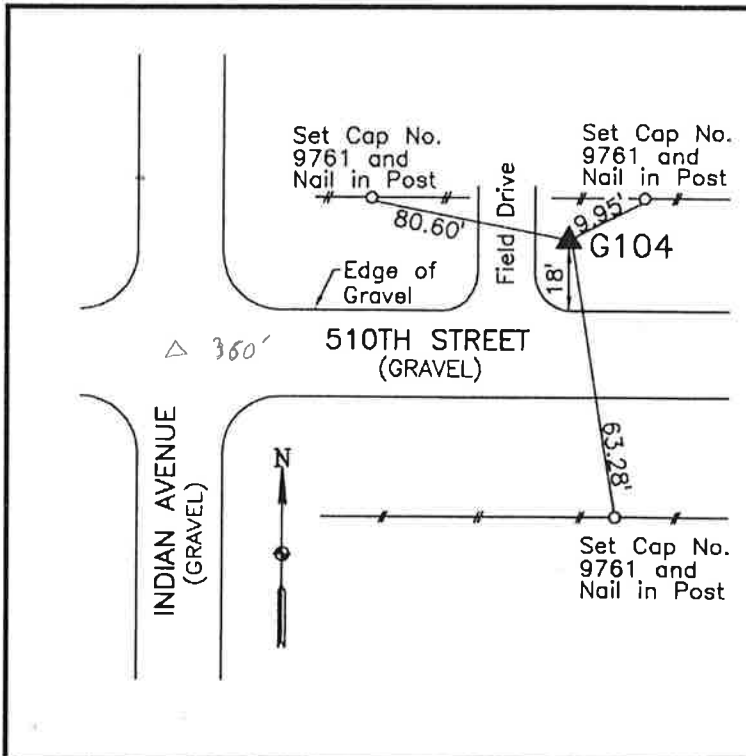
Latitude:	42° 54' 36.33277" N
Longitude:	96° 05' 40.09024" W
Scale Factor:	0.9999542995
Convergence:	-1° 45' 30.2"
Combined Factor:	0.99989340

Description:

Placed 3/4" X 6' - 0" Long Aluminum Rod with Cap Stamped G104 and NGS Style Access Cover 1" Deep

Location:

North side 510th Street 0.1 mile east of Indian Avenue near field entrance in Section 31, T94N, R44W.



WHKS & CO.