

**SIOUX COUNTY, IOWA
GPS CONTROL MONUMENT
IOWA NORTH ZONE (1401)
HORIZONTAL DATUM - NAD 83 (1996)
VERTICAL DATUM - NAVD 1988**

GPS POINT NUMBER **G105**

	US SURVEY FEET	METRIC
Northing:	3807410.846	1160501.147
Easting:	4210102.228	1283241.725
Elevation:	1291.716	393.716
Ellipsoid Height:	1205.408	367.409
Geoid 99 Height:	-86.308	-26.307

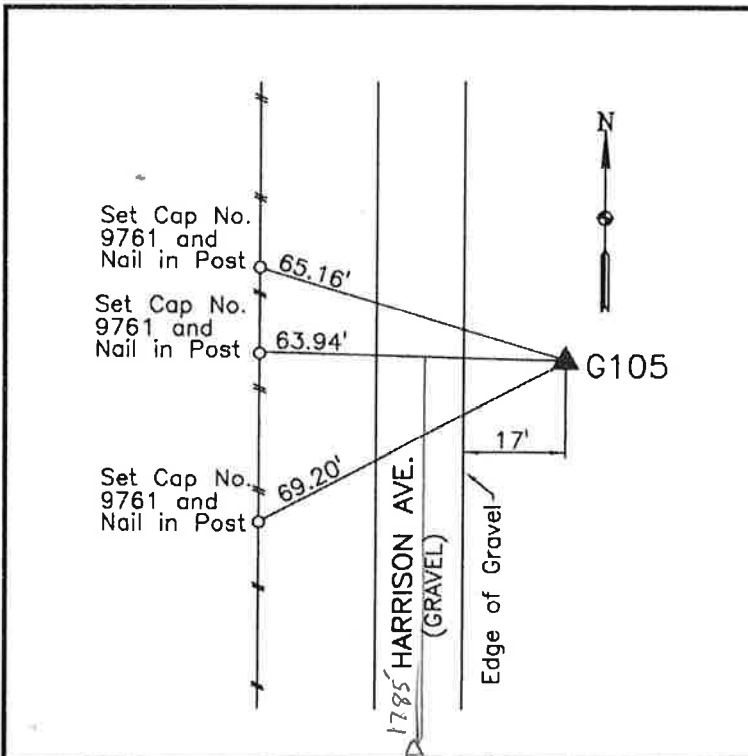
Latitude:	42° 54' 51.47719" N
Longitude:	96° 09' 18.52233" W
Scale Factor:	0.9999546124
Convergence:	-1° 47' 58.2"
Combined Factor:	0.99989710

Description:

Placed 3/4" X 6' - 0" Long Aluminum Rod with Cap Stamped G105 and NGS Style Access Cover 2" Deep

Location:

East side Harrison Avenue 0.3 mile north of 510th Street in Section 34, T94N, R45W.



WHKS & CO.