

**SIOUX COUNTY, IOWA
GPS CONTROL MONUMENT
IOWA NORTH ZONE (1401)
HORIZONTAL DATUM - NAD 83 (1996)
VERTICAL DATUM - NAVD 1988**

GPS POINT NUMBER **G106**

	US SURVEY FEET	METRIC
Northing:	3807622.432	1160565.638
Easting:	4194376.060	1278448.380
Elevation:	1394.583	425.070
Ellipsoid Height:	1308.636	398.873
Geoid 99 Height:	-85.947	-26.197

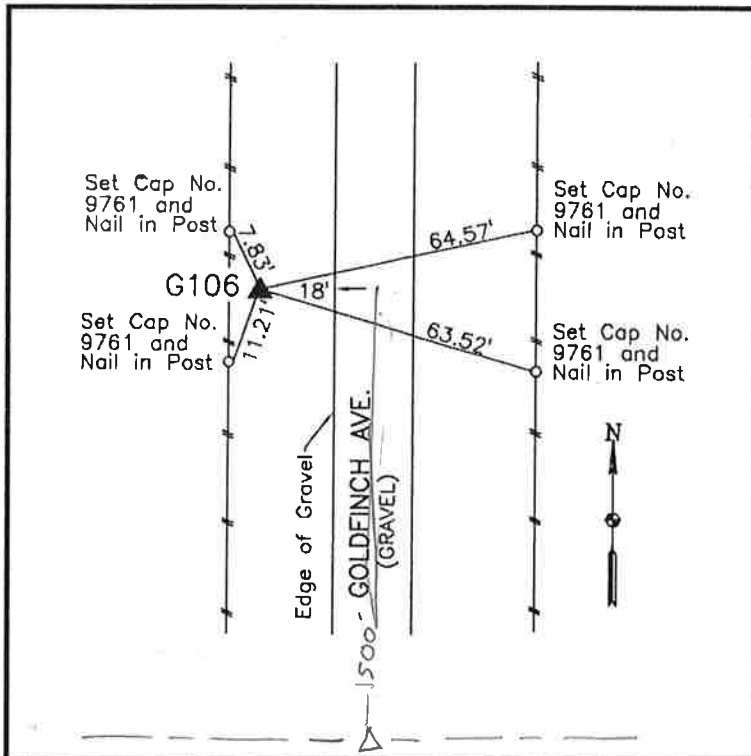
Latitude:	42° 54' 48.63422" N
Longitude:	96° 12' 49.84507" W
Scale Factor:	0.9999545532
Convergence:	-1° 50' 21.5"
Combined Factor:	0.99989212

Description:

Placed 3/4" X 6' - 0" Long Aluminum Rod with Cap Stamped G106 and NGS Style Access Cover 4" Deep

Location:

West side Goldfinch Avenue
0.3 mile north of 510th Street in
Section 36, T94N, R46W.



WHKS & CO.