

**SIoux COUNTY, IOWA  
GPS CONTROL MONUMENT  
IOWA NORTH ZONE (1401)  
HORIZONTAL DATUM - NAD 83 (1996)  
VERTICAL DATUM - NAVD 1988**

GPS POINT NUMBER      **G107**

	US SURVEY FEET	METRIC
Northing:	3807038.829	1160387.756
Easting:	4178457.824	1273596.492
Elevation:	1432.078	436.498
Ellipsoid Height:	1346.426	410.392
Geoid 99 Height:	-85.651	-26.107

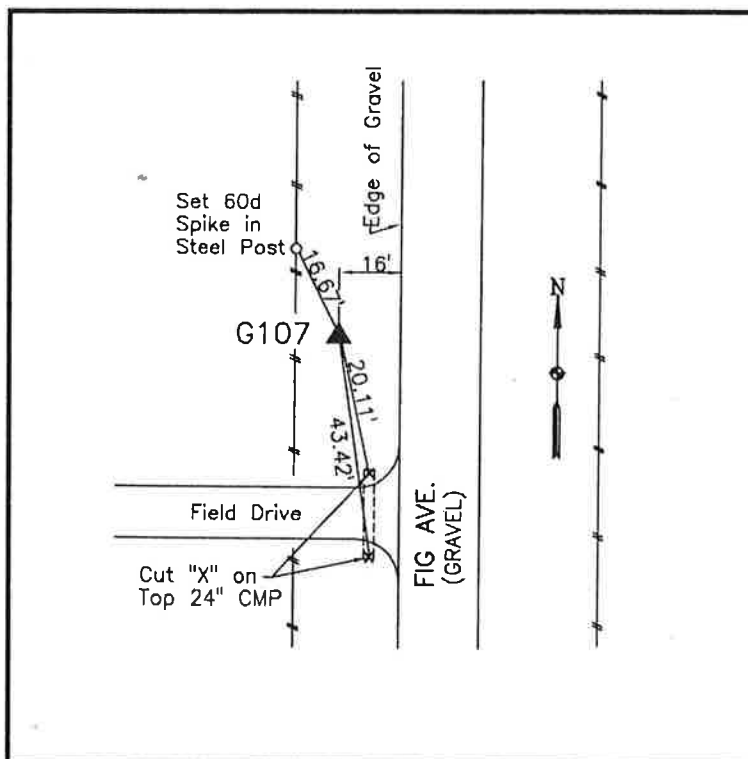
Latitude:	42° 54' 37.77072" N
Longitude:	96° 16' 23.39156" W
Scale Factor:	0.9999543290
Convergence:	-1° 52' 46.2"
Combined Factor:	0.99989009

**Description:**

Placed 3/4" X 6' - 0" Long Aluminum Rod with Cap Stamped G107 and NGS Style Access Cover 1" Deep

**Location:**

West side Fig Avenue 0.1 mile north of 510th Street in Section 33, T94N, R46W.



**WHKS & CO.**