

**SIOUX COUNTY, IOWA  
GPS CONTROL MONUMENT  
IOWA NORTH ZONE (1401)  
HORIZONTAL DATUM - NAD 83 (1996)  
VERTICAL DATUM - NAVD 1988**

GPS POINT NUMBER     **G108**

	US SURVEY FEET	METRIC
Northing:	3807298.575	1160466.927
Easting:	4162752.456	1268809.486
Elevation:	1424.589	434.216
Ellipsoid Height:	1339.161	408.177
Geoid 99 Height:	-85.428	-26.039

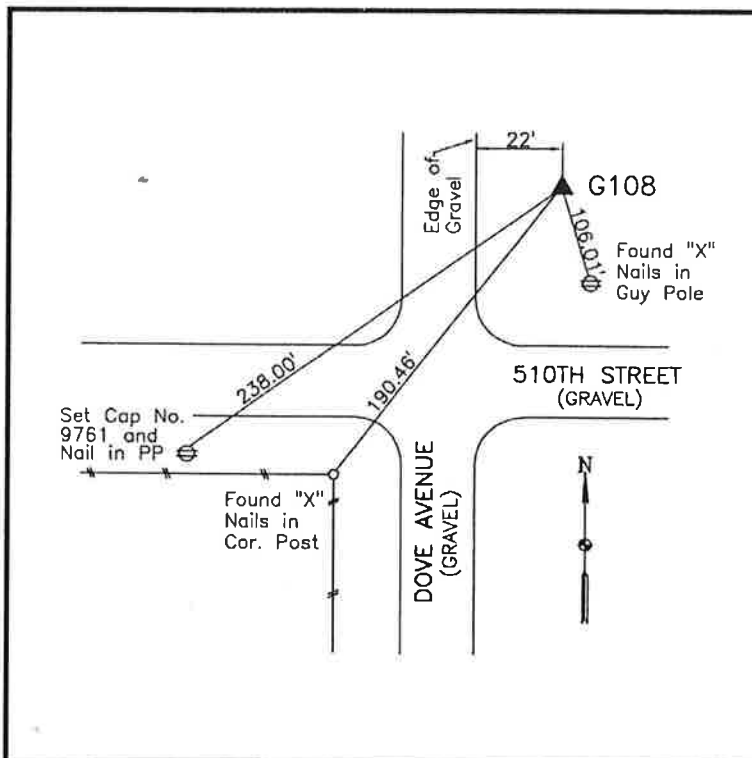
Latitude:	42° 54' 35.19325" N
Longitude:	96° 19' 54.43798" W
Scale Factor:	0.9999542762
Convergence:	-1° 55' 09.2"
Combined Factor:	0.99989039

**Description:**

Placed 3/4" X 6' - 0" Long Aluminum Rod with Cap Stamped G108 and NGS Style Access Cover 1" Deep

**Location:**

East side Dove Avenue just north of 510th Street in Section 31, T94N, R46W.



**WHKS & CO.**