

**SIOUX COUNTY, IOWA
GPS CONTROL MONUMENT
IOWA NORTH ZONE (1401)
HORIZONTAL DATUM - NAD 83 (1996)
VERTICAL DATUM - NAVD 1988**

GPS POINT NUMBER **G109**

	US SURVEY FEET	METRIC
Northing:	3807781.745	1160614.197
Easting:	4146863.432	1263966.502
Elevation:	1293.937	394.393
Ellipsoid Height:	1208.752	368.428
Geoid 99 Height:	-85.185	-25.964

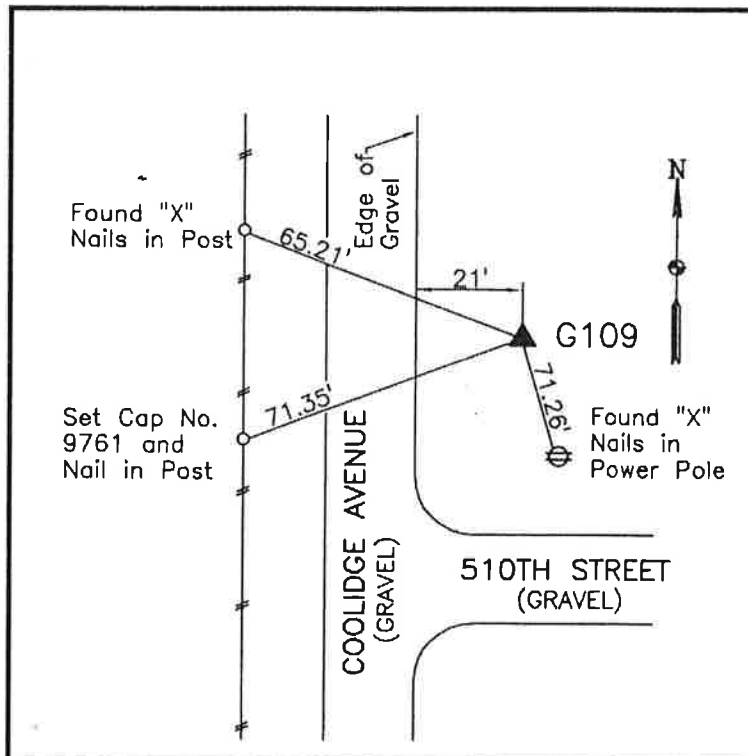
Latitude:	42° 54' 34.65182" N
Longitude:	96° 23' 28.04853" W
Scale Factor:	0.9999542651
Convergence:	-1° 57' 34.0"
Combined Factor:	0.99989660

Description:

Placed 3/4" X 6' - 0" Long Aluminum Rod with Cap Stamped G109 and NGS Style Access Cover 2" Deep

Location:

East side Coolidge Avenue just north of 510th Street in Section 34, T94N, R47W.



WHKS & CO.