

**SIOUX COUNTY, IOWA
GPS CONTROL MONUMENT
IOWA NORTH ZONE (1401)
HORIZONTAL DATUM - NAD 83 (1996)
VERTICAL DATUM - NAVD 1988**

GPS POINT NUMBER **G110**

	US SURVEY FEET	METRIC
Northing:	3808305.137	1160773.727
Easting:	4129759.673	1258753.266
Elevation:	1366.338	416.461
Ellipsoid Height:	1281.476	390.595
Geoid 99 Height:	-84.862	-25.866

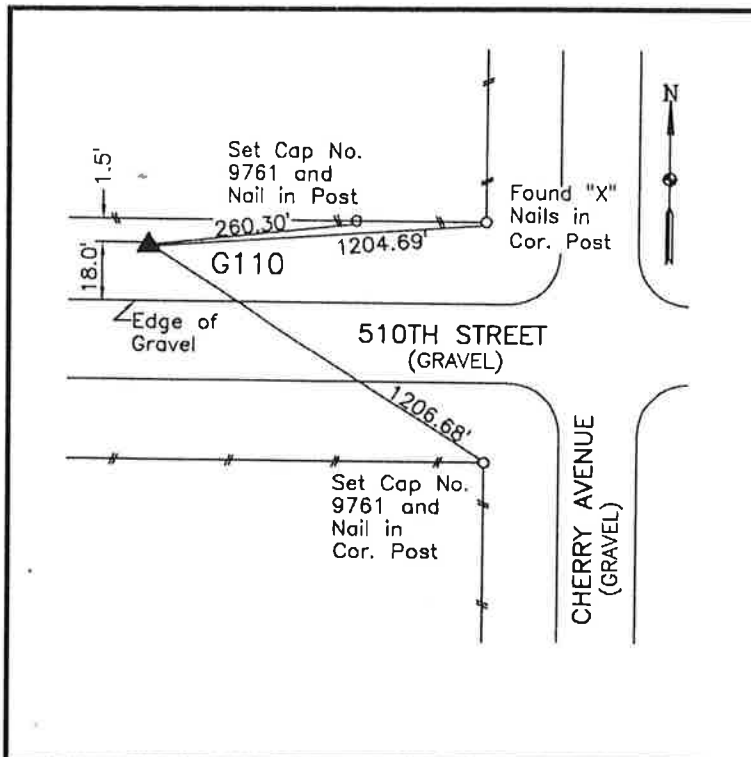
Latitude:	42° 54' 33.97823" N
Longitude:	96° 27' 17.99014" W
Scale Factor:	0.9999542513
Convergence:	-2° 00' 09.8"
Combined Factor:	0.99989311

Description:

Placed 3/4" X 6' - 0" Long Aluminum Rod with Cap Stamped G110 and NGS Style Access Cover 1" Deep

Location:

North side of 510th Street 0.25 mile west of Cherry Avenue in Section 36, T94N, R48W.



WHKS & CO.