

**SIoux COUNTY, IOWA
GPS CONTROL MONUMENT
IOWA NORTH ZONE (1401)
HORIZONTAL DATUM - NAD 83 (1996)
VERTICAL DATUM - NAVD 1988**

GPS POINT NUMBER **G111**

	US SURVEY FEET	METRIC
Northing:	3811376.909	1161710.005
Easting:	4112282.882	1253426.329
Elevation:	1156.463	352.491
Ellipsoid Height:	1071.911	326.719
Geoid 99 Height:	-84.553	-25.772

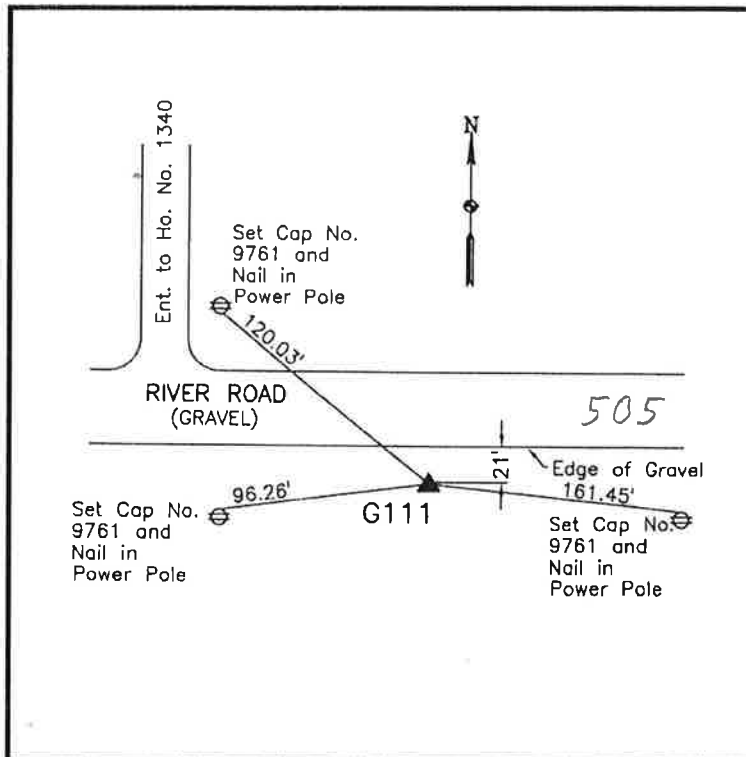
Latitude:	42° 54' 58.20163" N
Longitude:	96° 31' 14.16301" W
Scale Factor:	0.9999547530
Convergence:	-2° 02' 49.9"
Combined Factor:	0.99990361

Description:

Placed 3/4" X 6' - 0" Long Aluminum Rod with Cap Stamped G111 and NGS Style Access Cover 2" Deep

Location:

South side of River Road across from farm at 1340 River Road address in Section 33, T94N, R48W.



WHKS & CO.