

**SIOUX COUNTY, IOWA  
GPS CONTROL MONUMENT  
IOWA NORTH ZONE (1401)  
HORIZONTAL DATUM - NAD 83 (1996)  
VERTICAL DATUM - NAVD 1988**

GPS POINT NUMBER      **G112**

	US SURVEY FEET	METRIC
Northing:	3824580.022	1165734.322
Easting:	4119440.659	1255608.024
Elevation:	1174.513	357.992
Ellipsoid Height:	1089.685	332.137
Geoid 99 Height:	-84.828	-25.856

Latitude:                      42° 57' 11.05097" N

Longitude:                    96° 29' 44.31504" W

Scale Factor:                0.9999577496

Convergence:                -2° 01' 49.0"

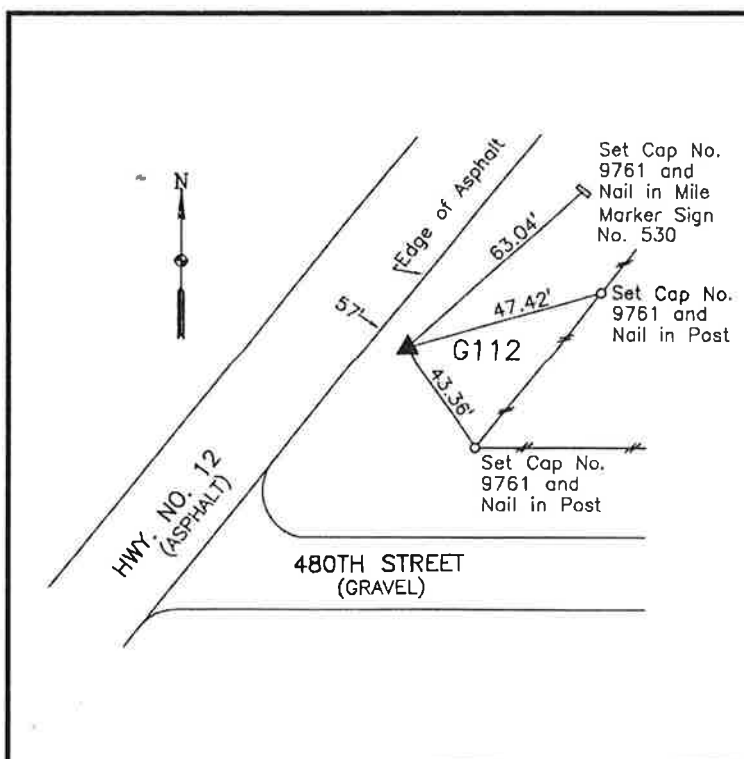
Combined Factor:            0.99990576

Description:

Placed 3/4" X 6' - 0" Long  
Aluminum Rod with Cap  
Stamped G112 and NGS Style  
Access Cover 2" Deep

Location:

Northeast side of intersection  
of Iowa Highway 12 and 480th  
Street in Section 15, T94N,  
R48W. Station 529+40.



**WHKS & CO.**

G112