

**SIOUX COUNTY, IOWA  
GPS CONTROL MONUMENT  
IOWA NORTH ZONE (1401)  
HORIZONTAL DATUM - NAD 83 (1996)  
VERTICAL DATUM - NAVD 1988**

GPS POINT NUMBER **G113**

	US SURVEY FEET	METRIC
Northing:	3824132.738	1165597.990
Easting:	4131032.873	1259141.338
Elevation:	1211.749	369.342
Ellipsoid Height:	1126.713	343.423
Geoid 99 Height:	-85.036	-25.919

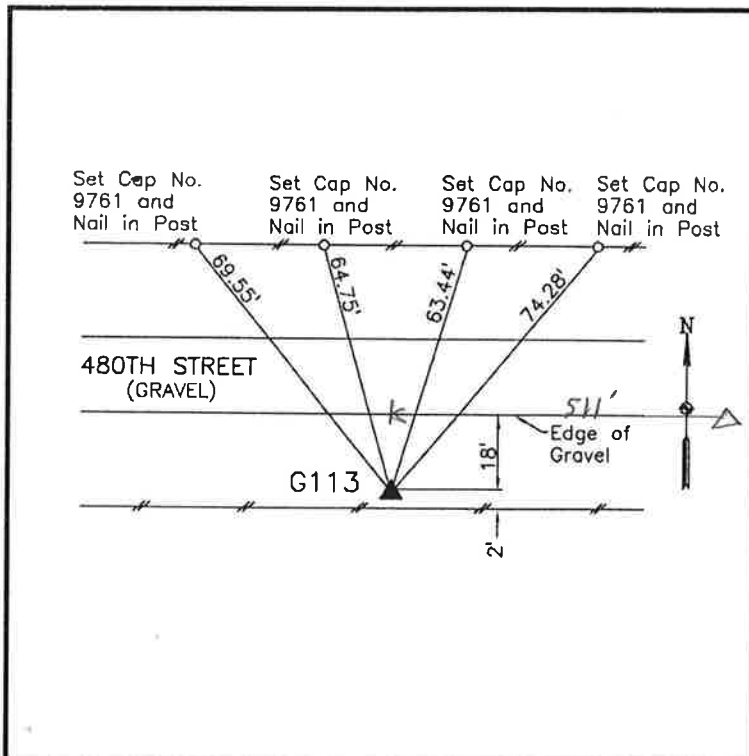
Latitude:	42° 57' 10.66286" N
Longitude:	96° 27' 08.31772" W
Scale Factor:	0.9999577403
Convergence:	-2° 00' 03.3"
Combined Factor:	0.99990399

Description:

Placed 3/4" X 6' - 0" Long Aluminum Rod with Cap Stamped G113 and NGS Style Access Cover 2" Deep

Location:

South side 480th Street 0.1 mile west of Cherry Avenue in Section 24, T94N, R48W.



**WHKS & CO.**