

SIOUX COUNTY, IOWA
GPS CONTROL MONUMENT
IOWA NORTH ZONE (1401)
HORIZONTAL DATUM - NAD 83 (1996)
VERTICAL DATUM - NAVD 1988

GPS POINT NUMBER **G114**

	US SURVEY FEET	METRIC
Northing:	3823624.377	1165443.041
Easting:	4147363.916	1264119.050
Elevation:	1380.421	420.753
Ellipsoid Height:	1295.109	394.750
Geoid 99 Height:	-85.312	-26.003

Latitude: 42° 57' 11.21855" N

Longitude: 96° 23' 28.60660" W

Scale Factor: 0.9999577537

Convergence: -1° 57' 34.4"

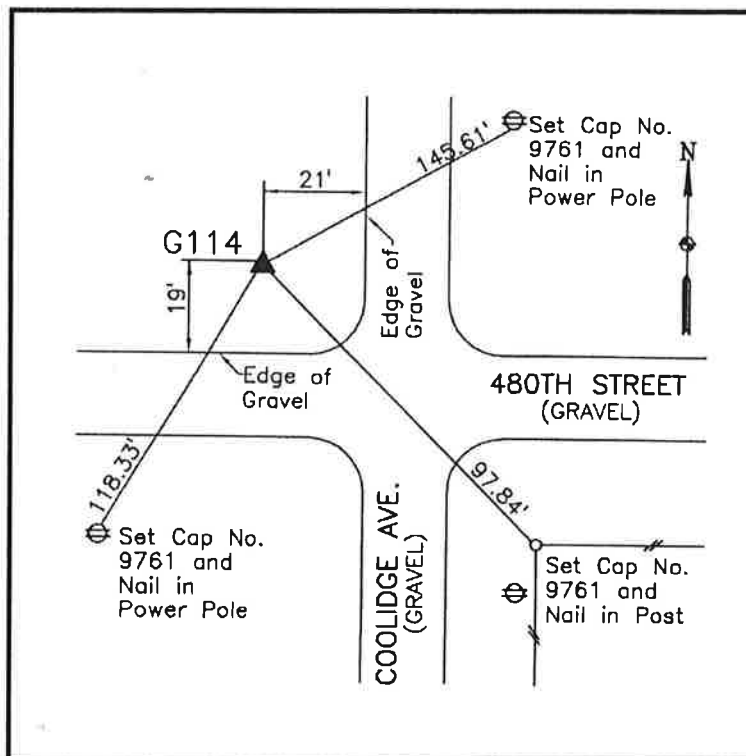
Combined Factor: 0.99989597

Description:

Placed 3/4" X 6' - 0" Long
 Aluminum Rod with Cap
 Stamped G114 and NGS Style
 Access Cover 2" Deep

Location:

Northwest side of intersection
 of Coolidge Avenue and 480th
 Street in Section 15, T94N,
 R47W.



WHKS & CO.