

**SIoux COUNTY, IOWA
GPS CONTROL MONUMENT
IOWA NORTH ZONE (1401)
HORIZONTAL DATUM - NAD 83 (1996)
VERTICAL DATUM - NAVD 1988**

GPS POINT NUMBER **G116**

	US SURVEY FEET	METRIC
Northing:	3822557.782	1165117.942
Easting:	4179144.336	1273805.741
Elevation:	1402.889	427.602
Ellipsoid Height:	1317.123	401.460
Geoid 99 Height:	-85.766	-26.142

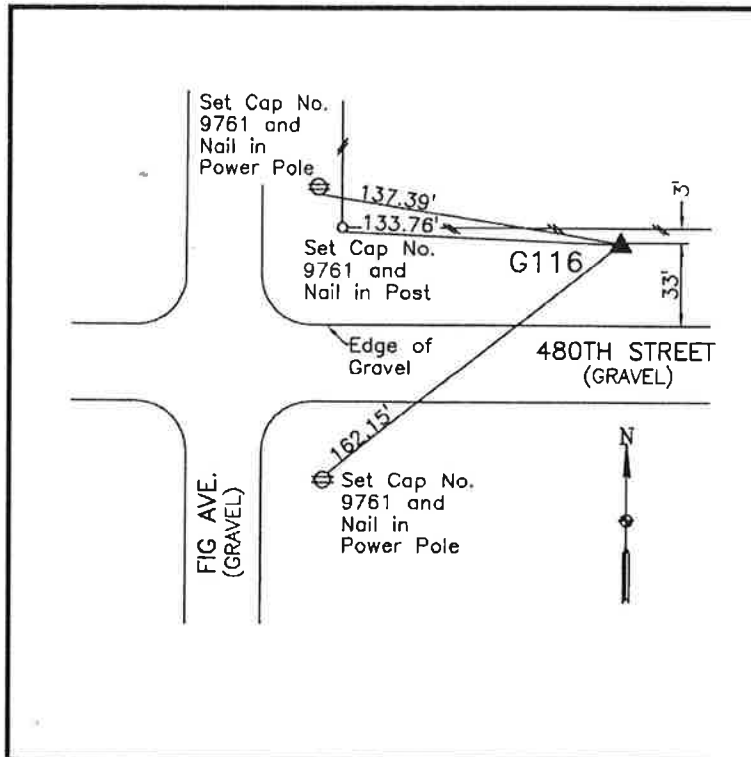
Latitude:	42° 57' 11.20262" N
Longitude:	96° 16' 21.00926" W
Scale Factor:	0.9999577533
Convergence:	-1° 52' 44.6"
Combined Factor:	0.99989491

Description:

Placed 3/4" X 6' - 0" Long Aluminum Rod with Cap Stamped G116 and NGS Style Access Cover 2" Deep

Location:

Northeast side of intersection of Fig Avenue and 480th Street in Section 15, T94N, R46W.



WHKS & CO.