

**SIoux COUNTY, IOWA
GPS CONTROL MONUMENT
IOWA NORTH ZONE (1401)
HORIZONTAL DATUM - NAD 83 (1996)
VERTICAL DATUM - NAVD 1988**

GPS POINT NUMBER **G117**

	US SURVEY FEET	METRIC
Northing:	3821976.844	1164940.872
Easting:	4194985.854	1278634.246
Elevation:	1327.588	404.650
Ellipsoid Height:	1241.547	378.424
Geoid 99 Height:	-86.041	-26.225

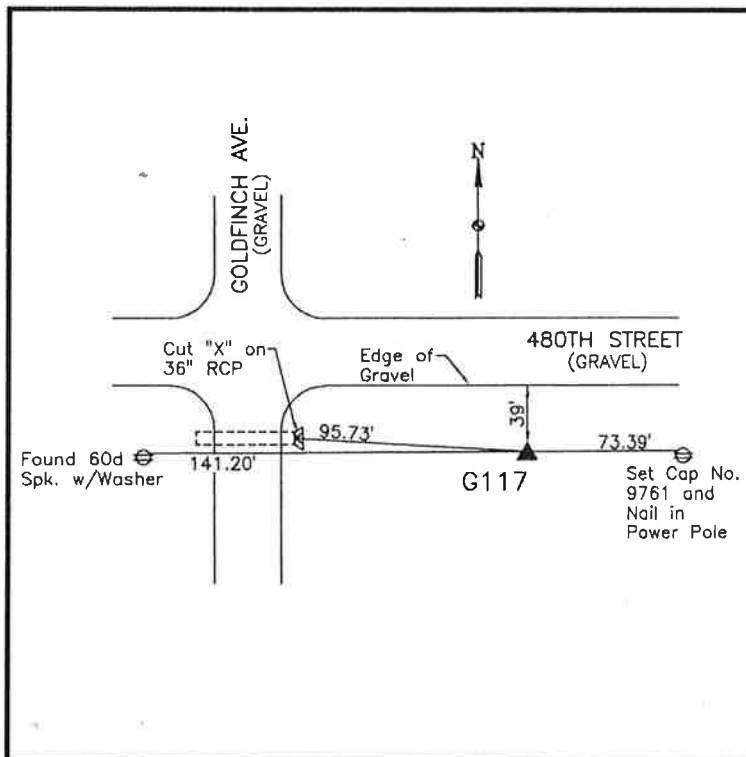
Latitude:	42° 57' 10.54339" N
Longitude:	96° 12' 47.84470" W
Scale Factor:	0.9999577374
Convergence:	-1° 50' 20.1"
Combined Factor:	0.99989850

Description:

Placed 3/4" X 6' - 0" Long Aluminum Rod with Cap Stamped G117 and NGS Style Access Cover 2" Deep

Location:

Southeast side of intersection of Goldfinch Avenue and 480th Street in Section 19, T94N, R45W.



North 19 5th Street