

**SIOUX COUNTY, IOWA
GPS CONTROL MONUMENT
IOWA NORTH ZONE (1401)
HORIZONTAL DATUM - NAD 83 (1996)
VERTICAL DATUM - NAVD 1988**

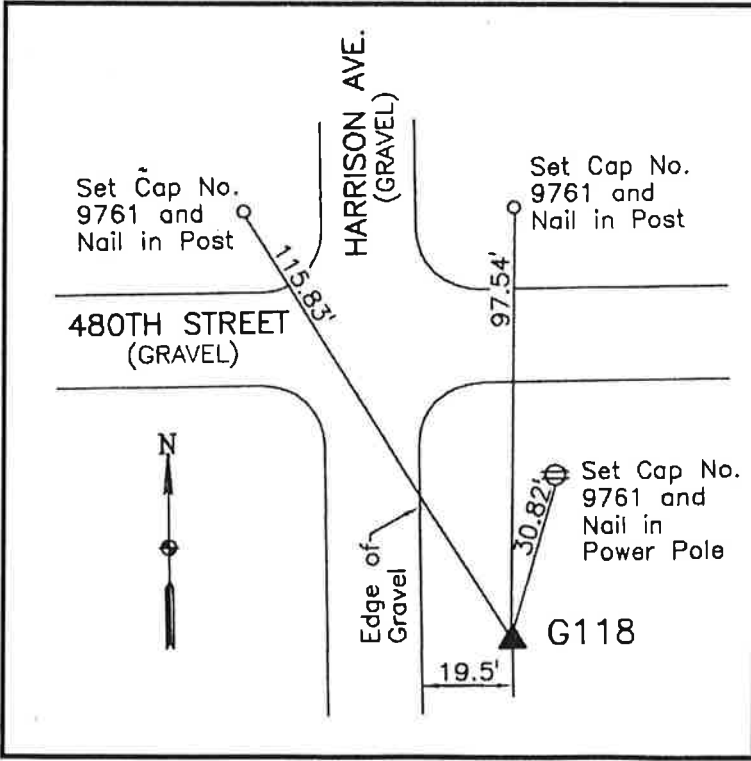
GPS POINT NUMBER **G118**

	US SURVEY FEET	METRIC
Northing:	3821511.528	1164799.043
Easting:	4210561.562	1283381.731
Elevation:	1344.563	409.824
Ellipsoid Height:	1258.182	383.495
Geoid 99 Height:	-86.380	-26.329

Latitude:	42° 57' 10.83358" N
Longitude:	96° 09' 18.30294" W
Scale Factor:	0.9999577444
Convergence:	-1° 47' 58.1"
Combined Factor:	0.99989772

Description:
Placed 3/4" X 6' - 0" Long
Aluminum Rod with Cap
Stamped G118 and NGS Style
Access Cover 1" Deep

Location:
Southeast side of intersection
of Harrison Avenue and 480th
Street in Section 22, T94N,
R45W.



WHKS & CO.