

**SIOUX COUNTY, IOWA
GPS CONTROL MONUMENT
IOWA NORTH ZONE (1401)
HORIZONTAL DATUM - NAD 83 (1996)
VERTICAL DATUM - NAVD 1988**

GPS POINT NUMBER **G119**

	US SURVEY FEET	METRIC
Northing:	3821214.754	1164708.586
Easting:	4226925.899	1288369.591
Elevation:	1393.494	424.738
Ellipsoid Height:	1306.768	398.304
Geoid 99 Height:	-86.726	-26.434

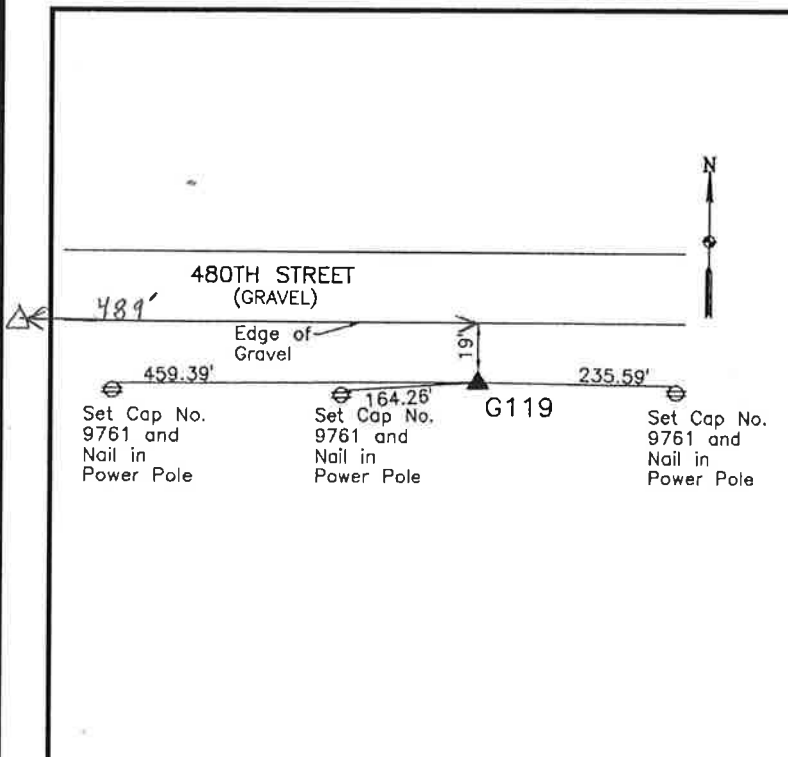
Latitude:	42° 57' 12.92093" N
Longitude:	96° 05' 38.23042" W
Scale Factor:	0.9999577948
Convergence:	-1° 45' 28.9"
Combined Factor:	0.99989545

Description:

Placed 3/4" X 6' - 0" Long Aluminum Rod with Cap Stamped G119 and NGS Style Access Cover 2" Deep

Location:

South side 480th Street 0.1 mile east of Indian Avenue in Section 19, T94N, R44W.



WHKS & CO.