

**SIOUX COUNTY, IOWA
GPS CONTROL MONUMENT
IOWA NORTH ZONE (1401)
HORIZONTAL DATUM - NAD 83 (1996)
VERTICAL DATUM - NAVD 1988**

GPS POINT NUMBER **G120**

	US SURVEY FEET	METRIC
Northing:	3821594.567	1164824.354
Easting:	4242135.619	1293005.523
Elevation:	1327.198	404.531
Ellipsoid Height:	1240.122	377.990
Geoid 99 Height:	-87.076	-26.541

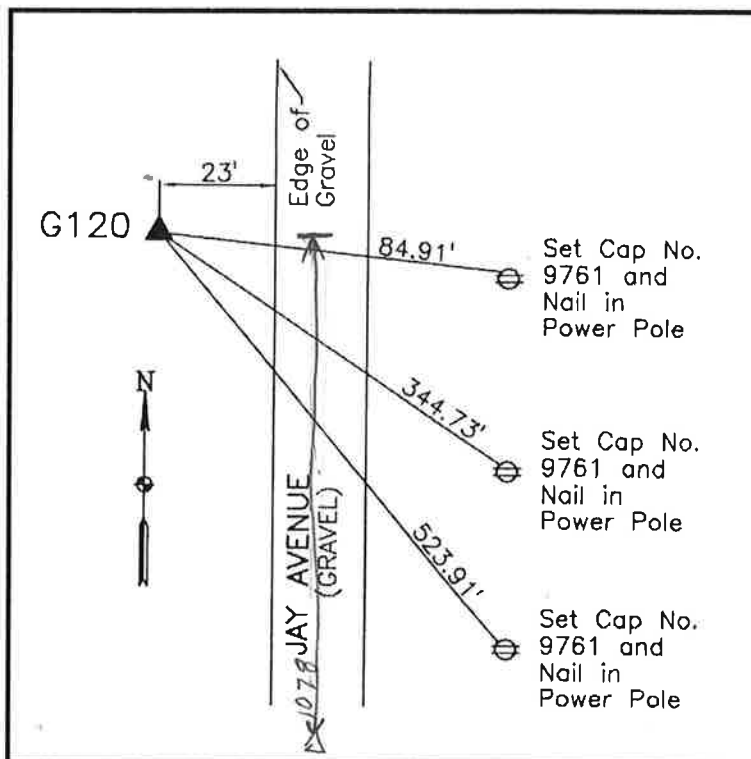
Latitude:	42° 57' 21.22954" N
Longitude:	96° 02' 13.94653" W
Scale Factor:	0.9999579963
Convergence:	-1° 43' 10.5"
Combined Factor:	0.99989883

Description:

Placed 3/4" X 6' - 0" Long Aluminum Rod with Cap Stamped G120 and NGS Style Access Cover 4" Deep

Location:

West side of Jay Avenue 0.2 miles north of 480th Street in Section 16, T94N, R44W.



WHKS & CO.