

**SIOUX COUNTY, IOWA  
GPS CONTROL MONUMENT  
IOWA NORTH ZONE (1401)  
HORIZONTAL DATUM - NAD 83 (1996)  
VERTICAL DATUM - NAVD 1988**

GPS POINT NUMBER      **G121**

	US SURVEY FEET	METRIC
Northing:	3820158.299	1164386.578
Easting:	4258214.327	1297906.323
Elevation:	1408.763	429.392
Ellipsoid Height:	1321.316	402.738
Geoid 99 Height:	-87.446	-26.654

Latitude:                      42° 57' 11.75813" N

Longitude:                    95° 58' 37.25069" W

Scale Factor:                0.9999577667

Convergence:               -1° 40' 43.6"

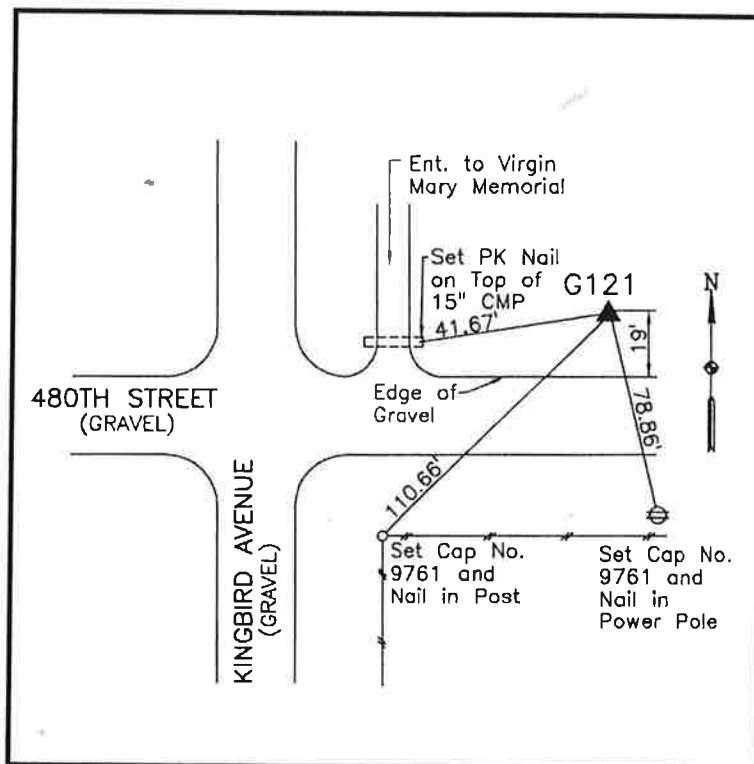
Combined Factor:           0.99989473

**Description:**

Placed 3/4" X 6' - 0" Long  
Aluminum Rod with Cap  
Stamped G121 and NGS Style  
Access Cover 4" Deep

**Location:**

Northeast side of intersection  
of Kingbird Avenue and 480th  
Street in Section 18, T94N,  
R43W.



**WHKS & CO.**