

**SIOUX COUNTY, IOWA
GPS CONTROL MONUMENT
IOWA NORTH ZONE (1401)
HORIZONTAL DATUM - NAD 83 (1996)
VERTICAL DATUM - NAVD 1988**

GPS POINT NUMBER **G122**

	US SURVEY FEET	METRIC
Northing:	3819363.751	1164144.400
Easting:	4273848.414	1302671.602
Elevation:	1398.995	426.415
Ellipsoid Height:	1311.175	399.647
Geoid 99 Height:	-87.820	-26.768

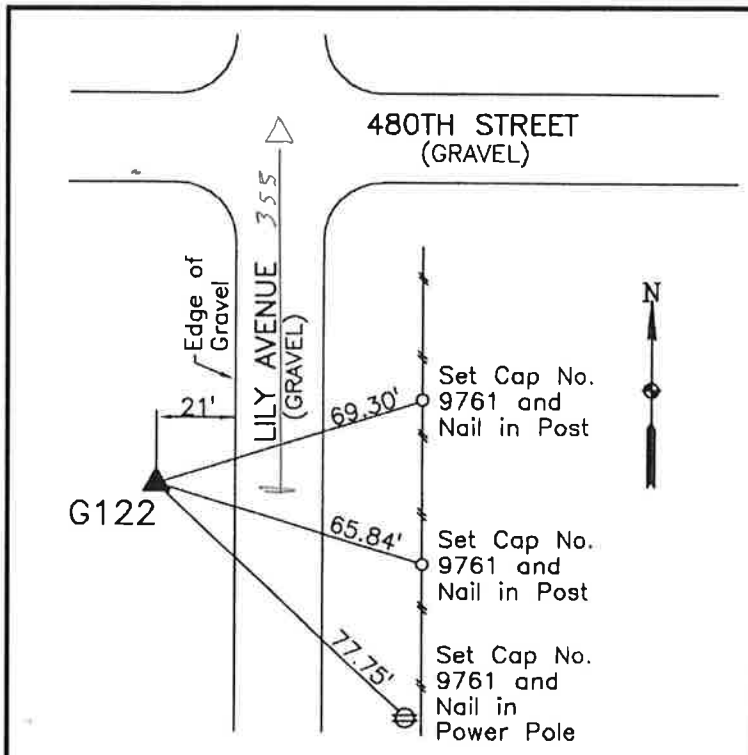
Latitude:	42° 57' 08.38391" N
Longitude:	95° 55' 06.79634" W
Scale Factor:	0.9999576854
Convergence:	-1° 38' 21.0"
Combined Factor:	0.99989513

Description:

Placed 3/4" X 6' - 0" Long Aluminum Rod with Cap Stamped G122 and NGS Style Access Cover 1" Deep

Location:

West side Lily Avenue 0.05 mile south of 480th Street in Section 21, T94N, R43W.



WHKS & CO.