

**SIOUX COUNTY, IOWA
GPS CONTROL MONUMENT
IOWA NORTH ZONE (1401)
HORIZONTAL DATUM - NAD 83 (1996)
VERTICAL DATUM - NAVD 1988**

GPS POINT NUMBER **G124**

	US SURVEY FEET	METRIC
Northing:	3835069.926	1168931.651
Easting:	4289060.863	1307308.366
Elevation:	1463.385	446.040
Ellipsoid Height:	1375.199	419.161
Geoid 99 Height:	-88.186	-26.879

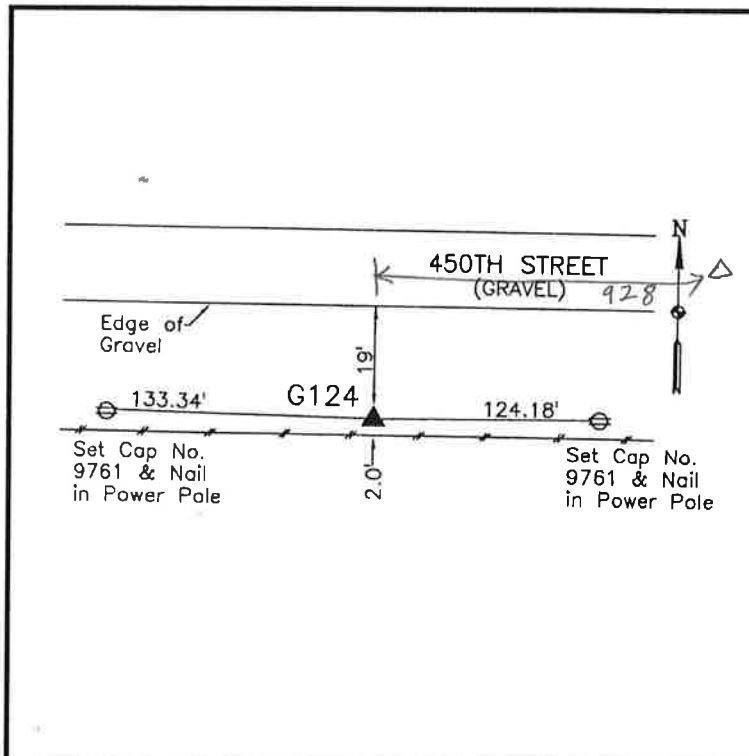
Latitude:	42° 59' 47.71067" N
Longitude:	95° 51' 48.21809" W
Scale Factor:	0.9999618169
Convergence:	-1° 36' 06.4"
Combined Factor:	0.99989621

Description:

Placed 3/4" X 6' - 0" Long Aluminum Rod with Cap Stamped G124 and NGS Style Access Cover 1" Deep

Location:

South side 450th Street 0.15 mile west of McKinley Avenue east county line in Section 1, T94N, R43W.



WHKS & CO.