

SIoux COUNTY, IOWA
GPS CONTROL MONUMENT
IOWA NORTH ZONE (1401)
HORIZONTAL DATUM - NAD 83 (1996)
VERTICAL DATUM - NAVD 1988

GPS POINT NUMBER **G125**

	US SURVEY FEET	METRIC
Northing:	3835296.148	1169000.604
Easting:	4274104.231	1302749.575
Elevation:	1430.097	435.895
Ellipsoid Height:	1342.267	409.124
Geoid 99 Height:	-87.830	-26.771

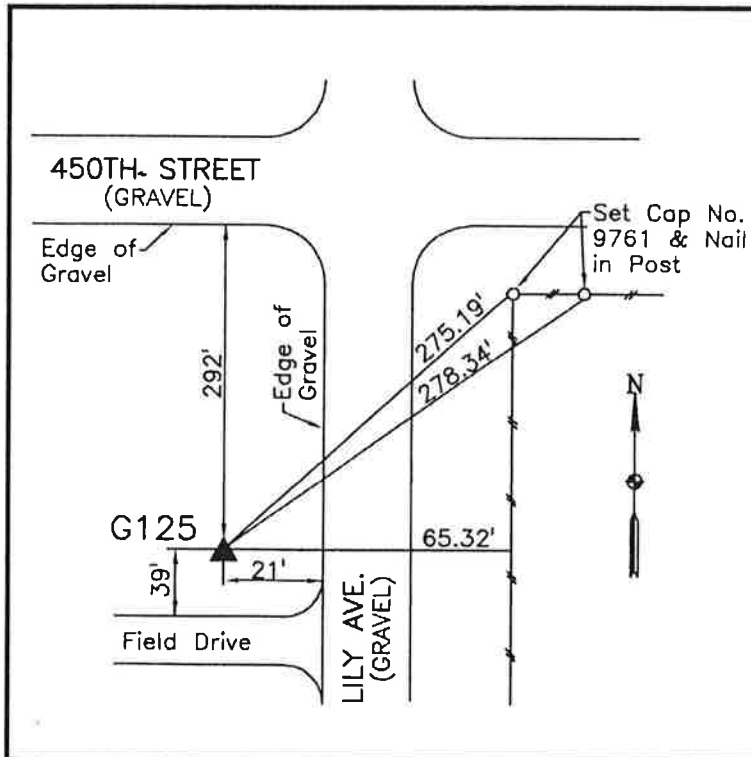
Latitude:	42° 59' 45.76588" N
Longitude:	95° 55' 09.48807" W
Scale Factor:	0.9999617629
Convergence:	-1° 38' 22.8"
Combined Factor:	0.99989772

Description:

Placed 3/4" X 6' - 0" Long Aluminum Rod with Cap Stamped G125 and NGS Style Access Cover 2" Deep

Location:

West side Lily Avenue 0.05 mile south of 450th Street in Section 4, T94N, R43W.



WHKS & CO.