

**SIoux COUNTY, IOWA  
GPS CONTROL MONUMENT  
IOWA NORTH ZONE (1401)  
HORIZONTAL DATUM - NAD 83 (1996)  
VERTICAL DATUM - NAVD 1988**

GPS POINT NUMBER **G126**

	US SURVEY FEET	METRIC
Northing:	3836150.565	1169261.031
Easting:	4258372.117	1297954.417
Elevation:	1412.168	430.430
Ellipsoid Height:	1324.681	403.763
Geoid 99 Height:	-87.487	-26.666

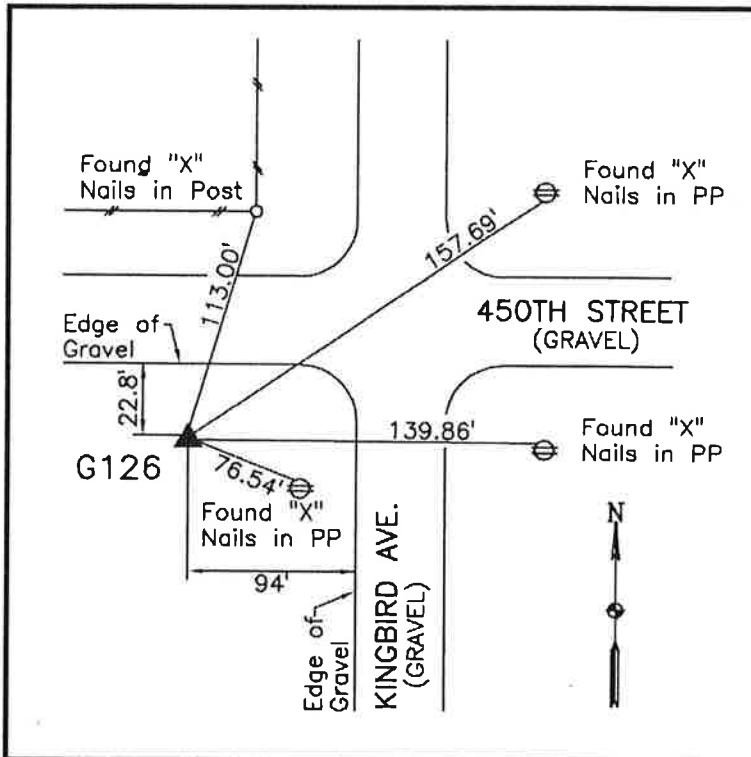
Latitude:	42° 59' 49.70138" N
Longitude:	95° 58' 41.43288" W
Scale Factor:	0.9999618723
Convergence:	-1° 40' 46.5"
Combined Factor:	0.99989867

**Description:**

Placed 3/4" X 6' - 0" Long Aluminum Rod with Cap Stamped G126 and NGS Style Access Cover 1" Deep

**Location:**

Southwest side of intersection of Kingbird Avenue and 450th Street in Section 1, T94N, R44W.



**WHKS & CO.**